



***REVEAL TRUE
PERFORMANCE.***

SALES CATALOGUE

WWW.UMARACING.COM



LUBRICANTS



- Prolongs engine life
- Formulated for any engine
- Keeps engine clean to maintain peak performance
- Low on maintenance with extra protection for engine components

HP2000

SEMI SYNTHETIC 



CODE	VISCOSITY
02000180	SAE 10W - 30
02000200	SAE 10W - 40
02000210	SAE 15W - 50

HP3000

FULL SYNTHETIC  



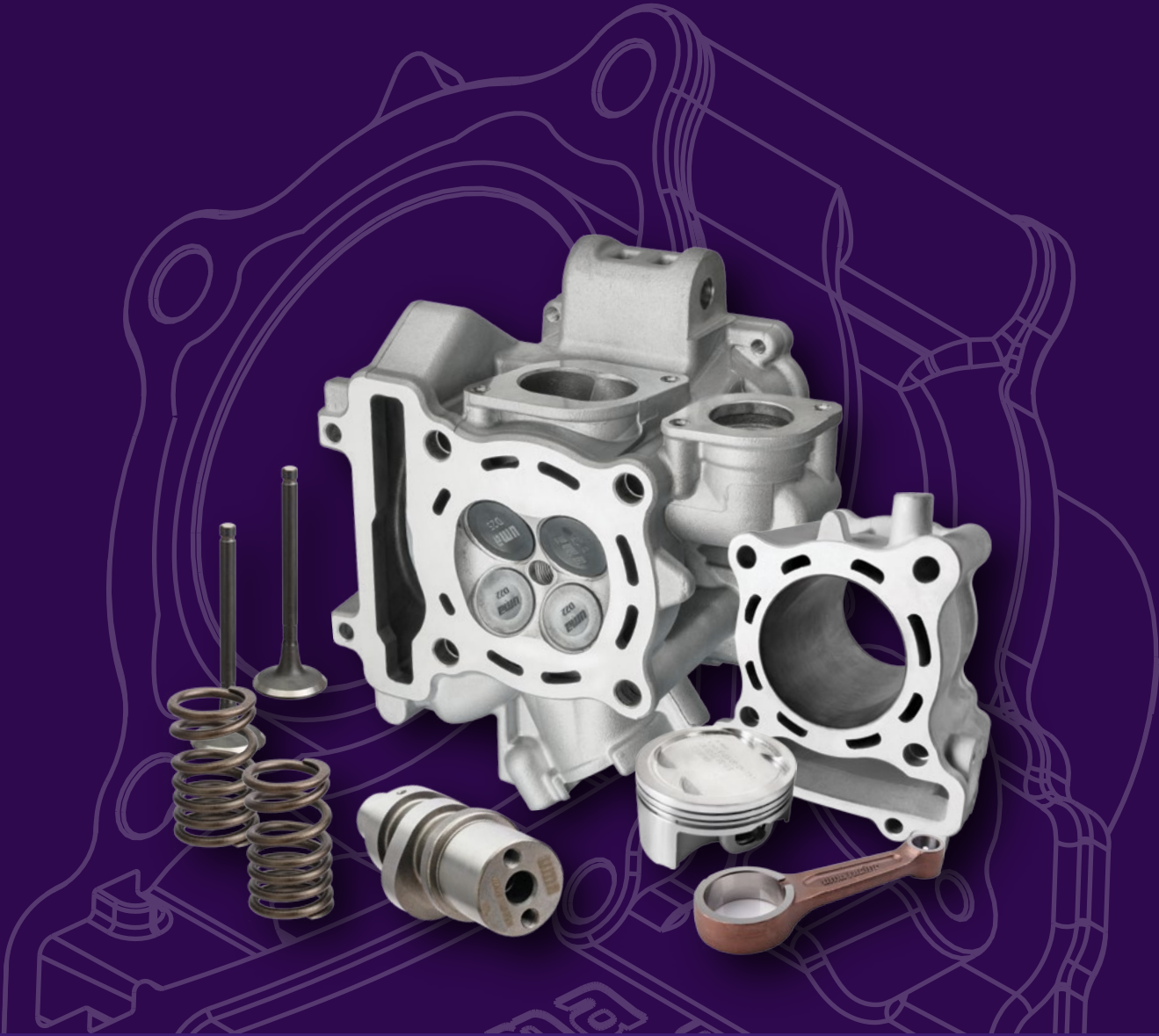
CODE	VISCOSITY
02000140	SAE 10W - 30
02000160	SAE 10W - 50



CODE	VISCOSITY
02000220	SAE 10W - 40

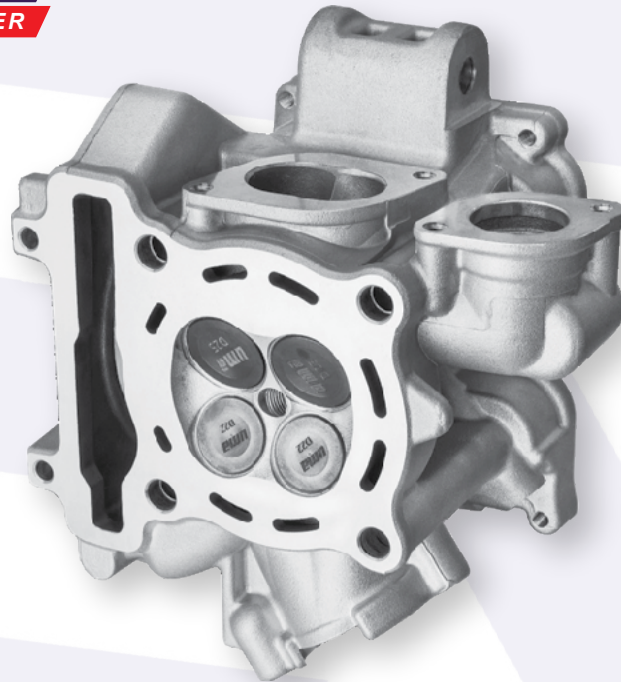


CODE	VISCOSITY
02000230	SAE 5W - 40



ENGINE POWER PARTS

SUPERHEAD
APPLE COMBUSTION CHAMBER



SUPERHEAD APPLE COMBUSTION CHAMBER
Y15ZR

FEATURES:

- Heat resistance at elevated temperature
- High strength & ductility aluminium
- Maximise air & fuel mixture flow
- Increase engine performance
- Oval shaped exhaust port



O2 Sensor Port



Oval Shaped Port



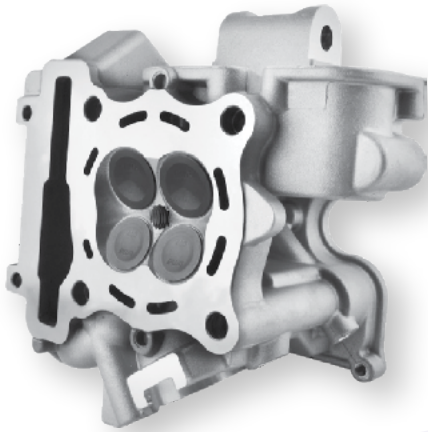
Apple Shaped
Combustion Chamber

FULL KIT

CODE	VALVE SIZE
02H00290	IN 23 / EX 20
02H00300	IN 25 / EX 22

**REPLACEMENT KIT
 (HEAD & VALVE ONLY)**

CODE	VALVE SIZE
02H00380	IN 25 / EX 22



SUPERHEAD
FZ150I / LC4S / LC5S

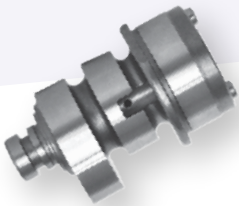
FULL KIT

CODE	VALVE SIZE
02H00070	IN 23 / EX 20
02H00180	IN 25 / EX 22

**REPLACEMENT KIT
(HEAD & VALVE ONLY)**

CODE	VALVE SIZE
02H00170	IN 25 / EX 22

SUPERHEAD PARTS



R1 HIGH CAM

CODE	MODEL
02HC0010	FZ150I / LC4S / LC5S



ROCKER ARM

CODE	MODEL
02H00090	FZ150I / LC4S / LC5S



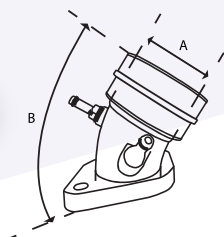
VALVE SPRING K2

CODE	MODEL
02V00430	Y15ZR



VALVES

CODE	SIZE	MODEL
02H00240	IN 25 / EX 22	FZ150I / LC4S / LC5S
02H00100	IN 23 / EX 20	FZ150I / LC4S / LC5S
02H00390	IN 25 / EX 22	Y15ZR (SUPERHEAD USE)



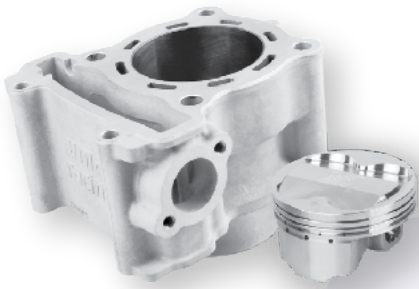
INTAKE

CODE	MODEL	A	B
02I00140	FZ150I / LC4S / LC5S	28MM	90°
02I00150	FZ150I / LC4S / LC5S	30MM	90°
02I00160	FZ150I / LC4S / LC5S	32MM	90°
02I00170	FZ150I / LC4S / LC5S	34MM	90°



CERAMIC CYLINDER BLOCK WITH SUPERHEAD COMPATIBLE PISTON

Y15ZR



- High performance engine enhancement
- Better tensile strength & durability
- Stable & reliable in performance
- Tough wear-resistant surface
- Superior heat dissipation

SUPERHEAD
APPLE COMBUSTION CHAMBER

CODE	SIZE
02B00630	62MM
02B00640	65MM

LONG SLEEVED CERAMIC CYLINDER BLOCK

Y15ZR



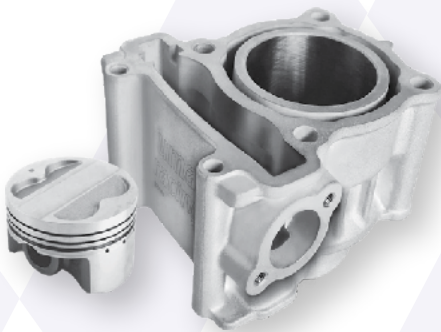
- Suitable for increased engine displacement
- Able to withstand extreme pressure
- Better tensile strength & durability
- Enhanced engine reinforcement
- Stable & reliable performance

LONG STROKE

CODE	SIZE
02B00600	62MM
02B00610	65MM

OPEN WATER JACKET CYLINDER BLOCK

Y15ZR



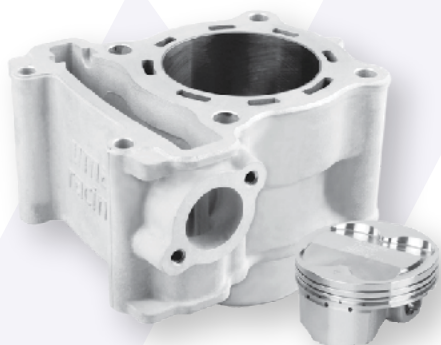
- Better tensile strength & durability
- Stable & reliable performance
- Tough wear-resistant surface
- Great increase in engine life
- Superior heat dissipation
- Enhanced water jacket

ENHANCED COOLING

CODE	SIZE
02B00520	62MM

XPRO CERAMIC CYLINDER BLOCK

Y15ZR



- Extreme compression
- Reinforced structure
- Increased power
- Ultimate tuning

XPRO EXTREME COMPRESSION

CODE	SIZE
02B00550	62MM
02B00560	65MM

CERAMIC CYLINDER BLOCK

Y15ZR



- Ceramic coated for tough wear resistance
- High tensile strength & durability
- Increase horsepower & torque
- Stable & reliable performance

CODE	SIZE
02B00370	57MM HIGH COMPRESSION
02B00350	62MM
02B00360	65MM

COMPOSITE CYLINDER BLOCK **NEW**

Y15ZR



- Cast iron liner
- Enhanced water jacket
- Superior cooling performance
- High pressure aluminium body

CODE	SIZE	NEW
02B00700	63MM	

CERAMIC CYLINDER BLOCK

LC135



- High tensile strength & durability
- Stable & reliable performance
- Aluminium cylinder body
- Ceramic coated bore
- Piston kit included

CODE	SIZE
02B00170	62MM
02B00240	65MM
02B00180	62MM SUPERHEAD PISTON
02B00260	65MM SUPERHEAD PISTON

CERAMIC CYLINDER BLOCK

NMAX / NVX / R15V3 / Y16ZR



- Ceramic coated for tough wear resistance
- High tensile strength & durability
- Increase horsepower & torque
- Stable & reliable performance

CODE	SIZE
02B00580	63MM

XPRO EXTREME COMPRESSION

CODE	SIZE
02B00590	63MM

COMPOSITE CYLINDER BLOCK NEW

NMAX / NVX / R15V3 / Y16ZR

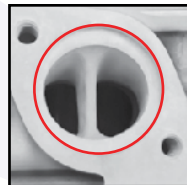
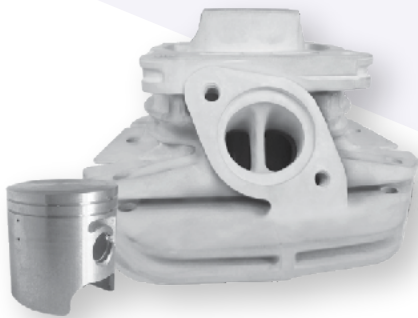


- Cast iron liner
- Enhanced water jacket
- Superior cooling performance
- High pressure aluminium body

CODE	SIZE	NEW
02B00710	63MM	

CERAMIC CYLINDER BLOCK

Y125Z



Centre rib exhaust port
for improved combustion

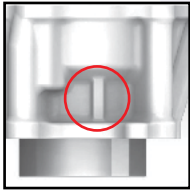
- Made from aluminium with ceramic coating finish
- Improved main & sub transfer port
- Increase horsepower & torque
- Improved cooling
- Noise reduction

CODE	SIZE
02B00250	62MM

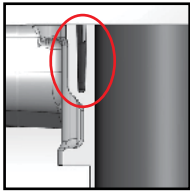


CERAMIC CYLINDER BLOCK

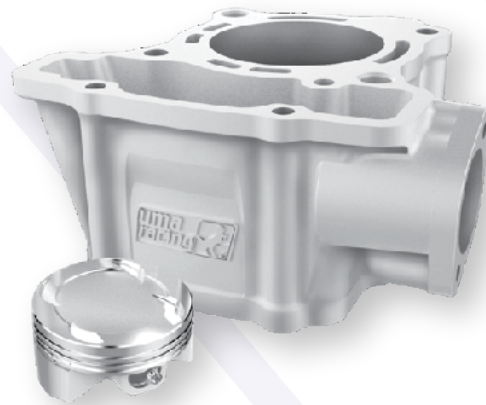
RS150R



Reinforced rib



Enhanced water jacket



- High performance engine enhancement
- Better tensile strength & durability
- Stable & reliable in performance
- Tough wear-resistant surface
- Superior heat dissipation

CODE	SIZE
02B00540	62MM

CERAMIC CYLINDER BLOCK

MSX125



- Ceramic coated for tough wear resistance
- High tensile strength & durability
- Increase horsepower & torque
- Stable & reliable performance
- Enhanced cooling

CODE	SIZE
02B00230	61MM

CERAMIC CYLINDER BLOCK

EX5 / EX5 DREAM

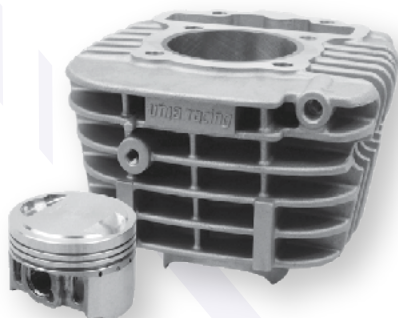


- Ceramic coated for tough wear resistance
- High tensile strength & durability
- Increase horsepower & torque
- Stable & reliable performance
- Enhanced cooling

CODE	SIZE
02B00200	53MM

CERAMIC CYLINDER BLOCK

WAVE110 / WAVE DASH / WAVE110 DX / EX5



- Ceramic coated for tough wear resistance
- High tensile strength & durability
- Increase horsepower & torque
- Stable & reliable performance
- Enhanced cooling

CODE	SIZE
02B00190	54MM

COMPOSITE CYLINDER BLOCK NEW

EX5



- Cast iron liner
- Enhanced water jacket
- Superior cooling performance
- High pressure aluminium body

CODE	SIZE	
02B00720	53MM	NEW

CERAMIC CYLINDER BLOCK

BELANG150

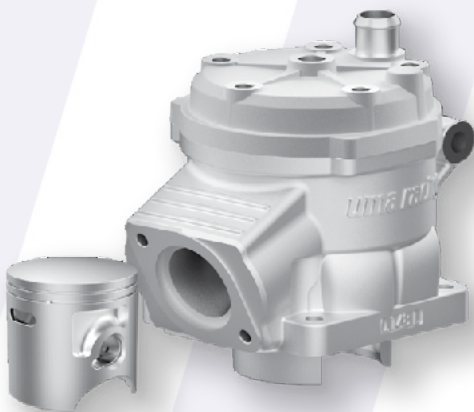


- Enhance high performance engines
- Better tensile strength & durability
- Stable & reliable performance
- Tough wear-resistant surface
- Great increase in engine life
- Superior heat dissipation

CODE	SIZE
02B00340	68MM STANDARD PISTON
02B00380	68MM HIGH COMPRESSION

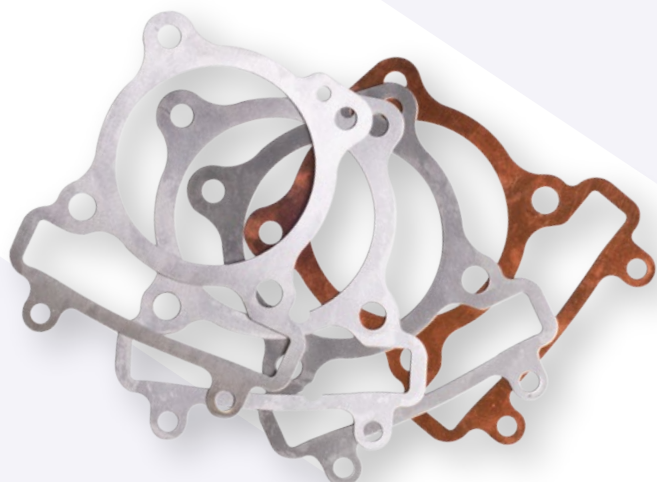
CERAMIC CYLINDER BLOCK WITH HEAD

KR150



- High tensile strength & durability
- Increase horsepower & torque
- Tough wear-resistant surface
- Superior heat dissipation
- Displacement upgrade

CODE	SIZE
02B00730	65MM



ALUMINIUM CYLINDER GASKET

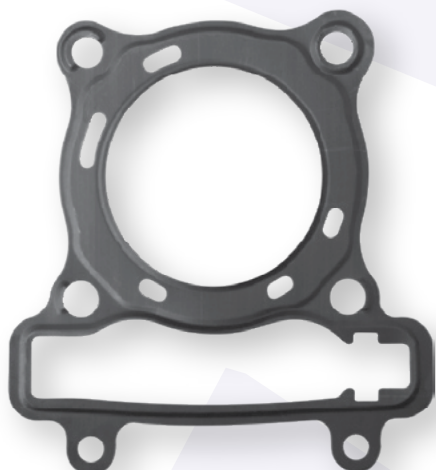
LC135

CODE	THICKNESS
02G00230	0.2MM
02G00240	0.3MM
02G00250	0.4MM
02G00260	0.5MM

ALUMINIUM CYLINDER HEAD GASKET

LC135

CODE
02G00010



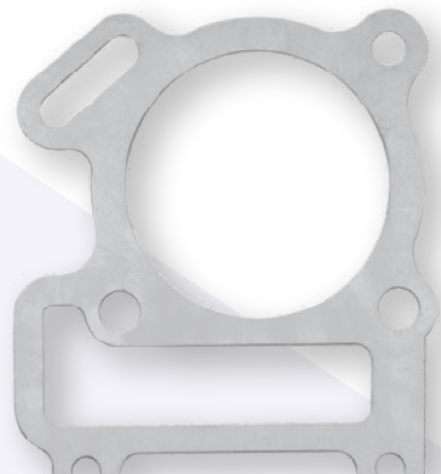
CYLINDER HEAD REPAIR GASKET

LC135 / FZ150I

CODE	TOP SIZE
02G00110	62MM
02G00200	65MM

ALUMINIUM BASE GASKET

CODE	MODEL	THICKNESS
02G00020	SRL110	0.2MM
02G00040	SRL110	0.3MM
02G00060	SRL110	0.4MM
02G00080	SRL110	0.5MM
02G00030	W110	0.2MM
02G00050	W110	0.3MM
02G00070	W110	0.4MM
02G00090	W110	0.5MM



RACING PISTON WITH RING

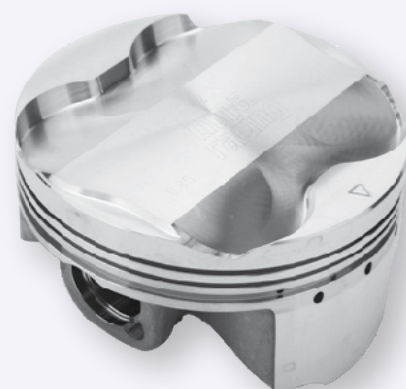


CODE	MODEL	SIZE
02P00510	SRL	52MM - R23/20V
02P00520	SRL	52MM - R27/23V
02P00530	SRL	55MM - R23/20V
02P00540	SRL	55MM - R27/23V

CODE	MODEL	SIZE
02P00120	EX5	51MM
02P00140	SRL	52MM
02P00130	SRL	52MM - R
02P00150	SRL	52MM - S
02P00160	SRL	53
02P00170	SRL	54 - R
02P00180	SRL	55MM - R23/20V
02P00190	SRL	55MM - R27/23V

RACING FORGED PISTON WITH MACHINING

CODE	MODEL	SIZE
02F00040	W110	51.25MM
02F00060	W110	54.5MM
02F00180	SRL110	52MM
02F00200	SRL110	55.25MM
02F00230	LC135	57MM
02F00310	LC135 (SUPERHEAD USE)	57MM
02F00100	LC135	62MM
02F00110	LC135 (STANDARD HEAD)	62MM
02F00120	LC135 (SUPERHEAD USE)	62MM
02F00240	LC135 (STANDARD HEAD)	65MM
02F00250	LC135 (SUPERHEAD USE)	65MM
02F00350	Y15ZR	57MM
02F00450	LC135 / Y15ZR (XPRO)	65MM
02F00440	Y125Z (CAST PISTON)	62MM
02F00380	RS150R	57.3MM



RACING FORGED PISTON WITHOUT MACHINING

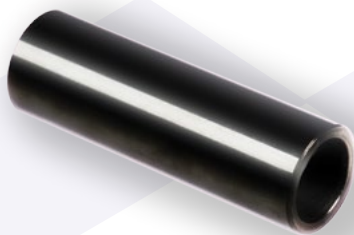


CODE	MODEL	SIZE
02F00050	W110	51.25MM
02F00070	W110	54.5MM
02F00190	SRL110	52MM
02F00210	SRL110	55.25MM
02F00380	RS150R	57.3MM
02F00480	Y15ZR FLATHEAD (CLIP & PIN ONLY)	57MM
02F00490	YAMAHA / HONDA (UNSHAVED)	53.4MM

PISTON RINGS



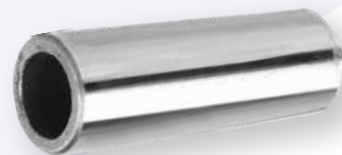
CODE	MODEL	SIZE
02P00080	LC135	62MM
02P00090	W110 / 115	51.25MM
02P00100	W110 / 115	54.5MM
02P00110	SRL	55MM
02P00790	EX5	53MM
02P00800	W110	54MM
02P00810	EGO	58.5MM
02P00830	SRL (FG2)	55.25MM
02P00840	SRL	52MM
02P00850	Y15ZR	65MM



- Diamond Like Carbon coating
- Improve durability
- Abrasion resistant
- Low friction

DLC PISTON PIN

CODE	SIZE
02PB0010	14 X 41MM
02PB0020	14 X 44MM

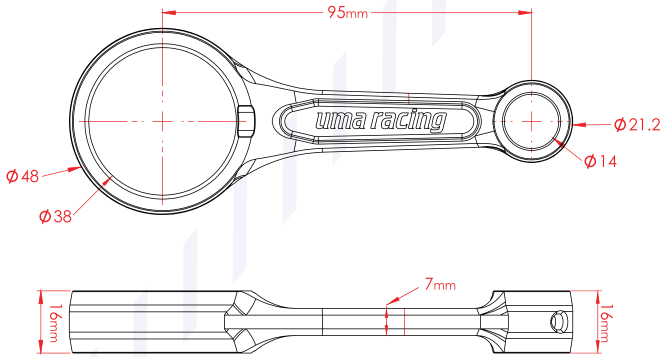


PISTON PIN

CODE	MODEL
02P00070	LC135

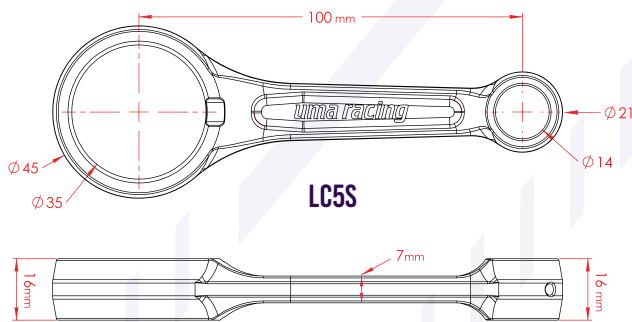
CONNECTING ROD

- Heavy duty connecting rod
- PEEK coated bearing retainer
- Sub-zero treated crankpin
- Built to withstand high stress



FULL KIT

CODE	MODEL
02B00660	RS150R



LC5S

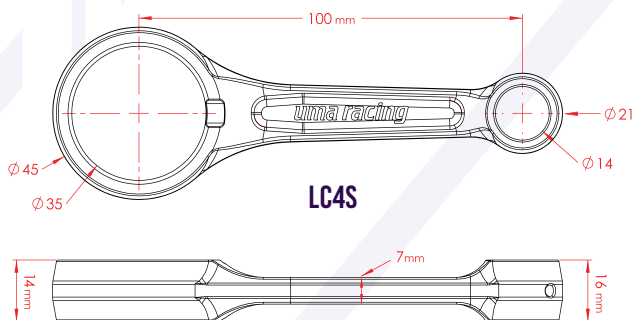


FULL KIT

CODE	MODEL
02B00410	LC4S
02B00450	LC5S

SPARE BEARINGS

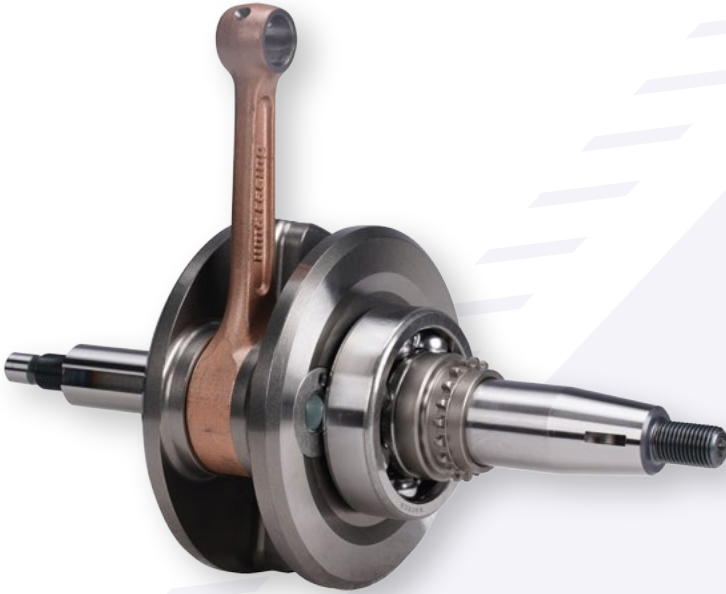
CODE	MODEL
02B00490	LC4S
02B00500	LC5S



LC4S

CRANKSHAFT

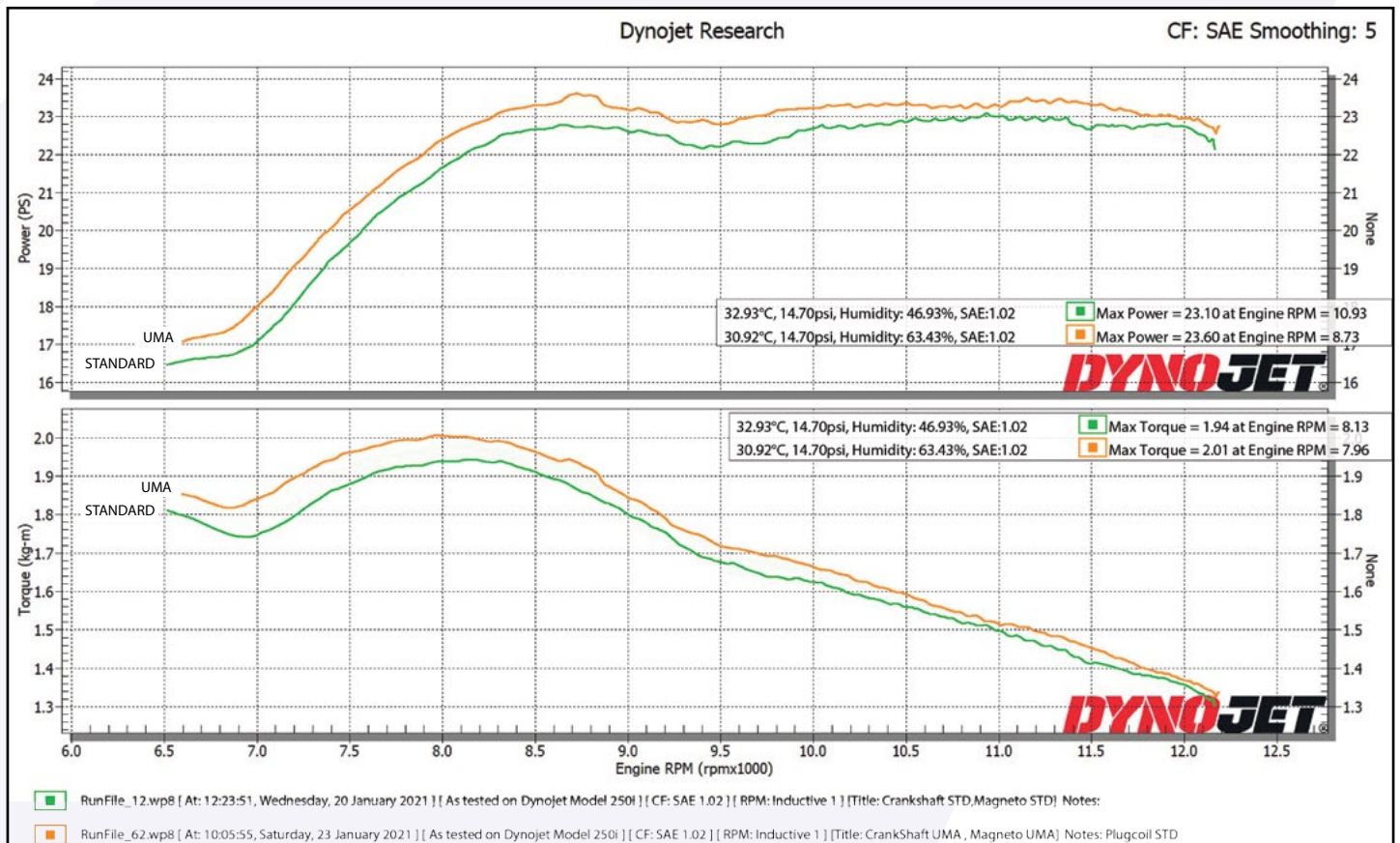
- Improves power
- Extended stroke
- Greater low range torque
- Increased engine displacement



CODE	MODEL	SIZE
02CS0010	Y15ZR	58.7MM
02CS0020	Y15ZR	62MM

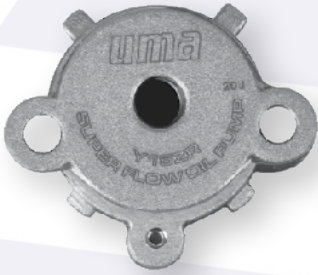
CRANKSHAFT DATA

SIZE	58.7MM	62MM
STROKE TOTAL OFFSET	-	3.3MM
ROD LENGTH	100MM	104MM
CRANK PIN DIAMETER	28MM	26MM
MAIN BEARING DIAMETER	25MM	25MM
CHAIN LINK	96L	98L

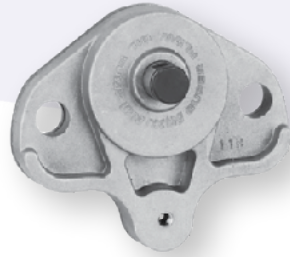


OIL PUMP

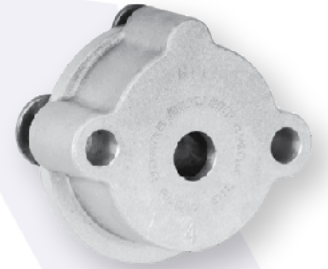
- Greater flow rate
- High volume pump
- Superior performance
- High pressure for essential engine needs



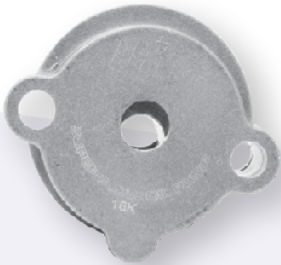
CODE	MODEL
02000100	Y15ZR
02000120	Y15ZR (V2) / Y16ZR



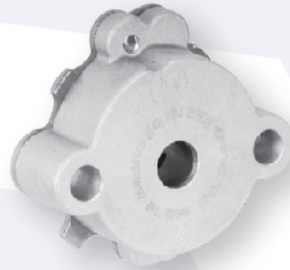
CODE	MODEL
02000020	SRL110



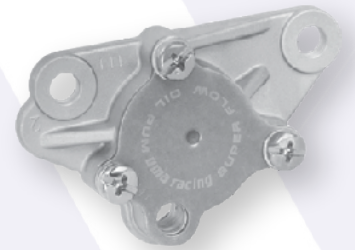
CODE	MODEL
02000040	LC135



CODE	MODEL
02000080	LC5S



CODE	MODEL
02000050	EGO



CODE	MODEL
02000030	EX5



CODE	MODEL
02000110	RS150R

DLC ROCKER ARM SHAFT NEW



- Diamond Like Carbon coating
- Improve durability
- Abrasion resistant
- Low friction

CODE	MODEL	NEW
02RS0001	Y15ZR / LC135	NEW
02RS0002	RS150R	NEW
02RS0003	NMAX / R15	NEW
02RS0004	VARI0150 / PCX	NEW

VALVE SET (INTAKE & EXHAUST)

CODE	MODEL	SIZE (IN / EX)
02V00030	SRL	27 / 23
02V00040	SRL - V2	27 / 23
02V00050	SRL - V2	28 / 23
02V00060	SMASH PRO	27 / 23
02V00070	SHOGUN110	28 / 24
02V00080	SMASH PRO V2	27 / 23
02V00090	KRISS	24 / 21
02V00100	SRL110-5TN	23 / 20
02V00110	SRL110-5TN	28 / 24
02V00310	LC135	22 / 19
02V00390	RS150R	24 / 21
02V00400	RS150R	22 / 19
02V00440	NMAX	22 / 19
02V00480	DASH	26 / 21



- Valve neck & base made from Stellite® alloy for strength & durability
- Superior flow of air & fuel mixture

VALVE (INTAKE)

CODE	MODEL	SIZE (IN)
02V00170	SRL / SRLZ	28
02V00180	SRL / SRLZ	29
02V00190	W110	27
02V00200	W110	28
02V00210	W110	29
02V00300	SRL	26

VALVE (EXHAUST)

CODE	MODEL	SIZE (EX)
02V00120	SRL / SRLZ	23
02V00130	SRL / SRLZ	24
02V00140	W110	23
02V00150	W110	24
02V00170	SRL / SRLZ	28

TITANIUM VALVE STEM BASE



CODE	MODEL
02V00230	EX5



CODE	MODEL
02V00240	LC135 / FZ150I

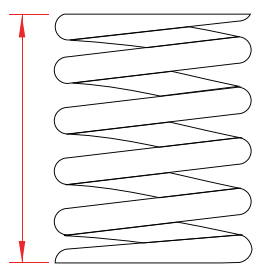
VALVE SPRING

• Improve valve control

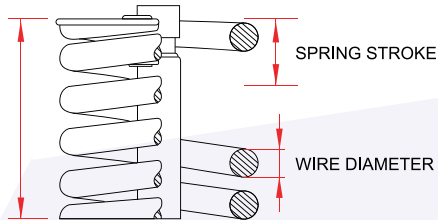
• Supports high cam lift

• Durable & reliable

• Precision engineered from best materials



FREE LENGTH



SET LENGTH



CODE	MODEL	WIRE DIAMETER	FREE LENGTH	SET LENGTH	SPRING STROKE
02V00320	BELANG	2.9MM	38.5MM	33.6MM	8.5MM
02V00410	LC135 (K2)	3.0MM	47.5MM	36MM	11MM
02V00430	Y15ZR (K2)	3.2MM	38.3MM	32.3MM	8.8MM
02V00460	RS150R (K2)	3.3MM	38.4MM	32.7MM	9MM
02V00500	VF3I	3MM	40.2MM	26.5MM	10MM



SAMURAI VALVE SPRING

CODE	MODEL	WIRE DIAMETER	FREE LENGTH	SET LENGTH	SPRING STROKE
02V00250	LC135	3.2MM	31.5MM	26.5 - 27.5MM	9.5MM

VALVE SPRING

CODE	MODEL
02V00220	SRL
02V00280	EX5
02V00290	SRL
02V00490	HONDA / YAMAHA
02V00210	W110
02V00300	SRL

HIGH CAM



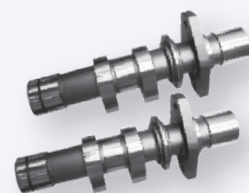
EX5



EGO



SRL



BELANG

CODE	MODEL	INTAKE	EXHAUST
02HC0040	(S1) LC135 / Y15ZR / FZ150I	7.5MM	7.52MM
02HC0010	(R1) LC135 / Y15ZR / FZ150I	7.71MM	7.85MM
02HC0030	(R3) LC135 / Y15ZR / FZ150I	8.64MM	8.82MM
02HC0050	(R4) LC135 / Y15ZR / FZ150I	9.60MM	9.37MM
02HC0060	(R5) LC135 / Y15ZR / FZ150I	9.32MM	9.26MM
02HC0070	(R8) LC135 / Y15ZR / FZ150I	9.42MM	9.38MM
02H00010	BELANG	7.4MM	6.5MM
02H00020	EGO	5.9MM	5.9MM
02H00030	EX5	6.8MM	6.4MM
02H00050	SMASH PRO	5.8MM	5.5MM
02H00060	SRL	5.9MM	5.8MM
02H00110	W110 (W/O ROCKERARM)	5.0MM	4.5MM
02H00120	EX5 (WITH ROCKER ARM)	6.8MM	6.4MM
02H00140	DASH125I / MSX125	5.04MM	4.92MM
02H00200	SRL115I	4.6MM	4.0MM
02H00210	DASH110	5.0MM	4.5MM
02H00270	(R1) BELANG	7.5MM	7.3MM
02H00310	WAVE125 (240°KIT)	7.25MM	6.83MM
02H00320	WAVE125 (260°KIT)	8.37MM	7.9MM
02H00330	NMAX	L: 6.22MM H: 7.7MM	6.0MM



W110



SMASH PRO



DASH110



DASH125i



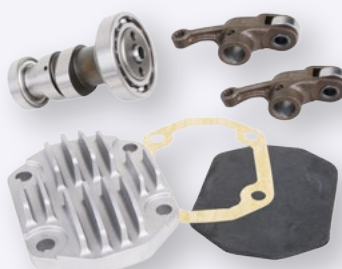
LC135 / Y15ZR / FZ150i



NMAX



WAVE125 KIT



EX5 ROLLER ACTIVE WITH ROCKER ARM



SRL115i

CAM STOPPER



- Developed to withstand high RPM
- Made from stainless steel
- Outstanding durability
- Increased rigidity

CODE	MODEL
02H00340	LC135 / FZ150I / Y15ZR

TIMING CHAIN NEW

- Corrosion resistant
- Increased wear resistance
- Improves chain and sprocket engagement



CODE	MODEL	LENGTH	
02CH0008	HONDA EX5 FI DASH / WAVE110	90L	NEW
02CH0009	HONDA WAVE125I W100 / EX5DREAM FUTURE125	88L	NEW

SILENT CHAIN

- Minimal chain noise
- Smooth operation
- Supreme durability



CODE	MODEL	LENGTH	
02CH0003	LC135 / Y15ZR	96L	
02CH0004	LC135 / Y15ZR	98L	
02CH0005	RS150	120L	NEW
02CH0006	RS150 (3*4)	122L	NEW
02CH0007	SRL115 / EGO NOUVO S (2*3)	90L	NEW

TIMING CHAIN GUIDE RAIL NEW

• Made for use with UMA Racing crankshafts

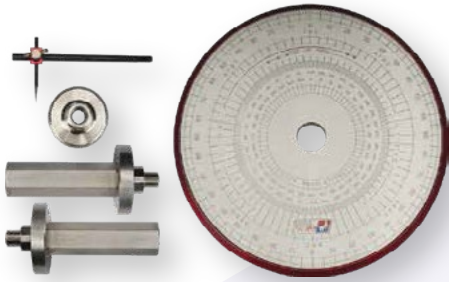
• Guide rail for engine with increased stroke

• Reduce rattling and chain wear



CODE	MODEL	LENGTH AND COMPATABILITY	NEW
02T00710	Y15ZR	+6MM (UMA CRANKSHAFT 62MM)	

DEGREE WHEEL KIT



- Ensures precise alignment & centering of component in the crankshaft
- Calculates camshaft duration, valve lift & cam lobe center
- Made from heavy gauge metal for long lasting use

CODE
02I00190

ADJUSTABLE TIMING GEAR

• Able to withstand high load

• Designed for increased rigidity & stability

• Secured fitting



Fine-tuning indicator to ensure precise adjustments to enhance efficiency & durability

CODE	MODEL
02T00630	SRL1151



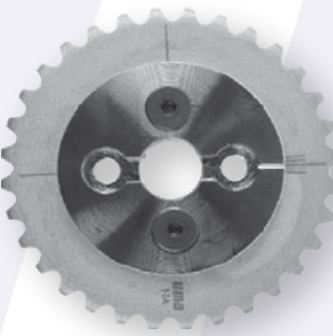
CODE	MODEL
02T00010	EX5



CODE	MODEL
02T00020	LC135 / FZ1501



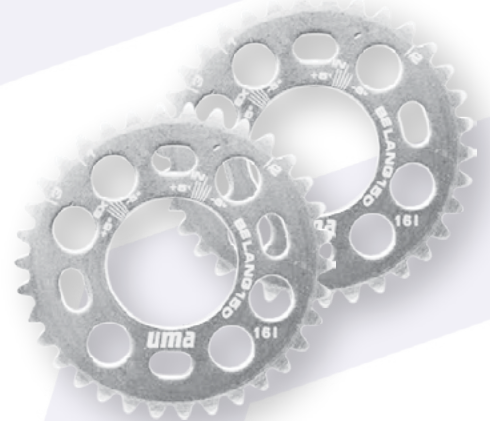
CODE	MODEL
02T00030	SRL



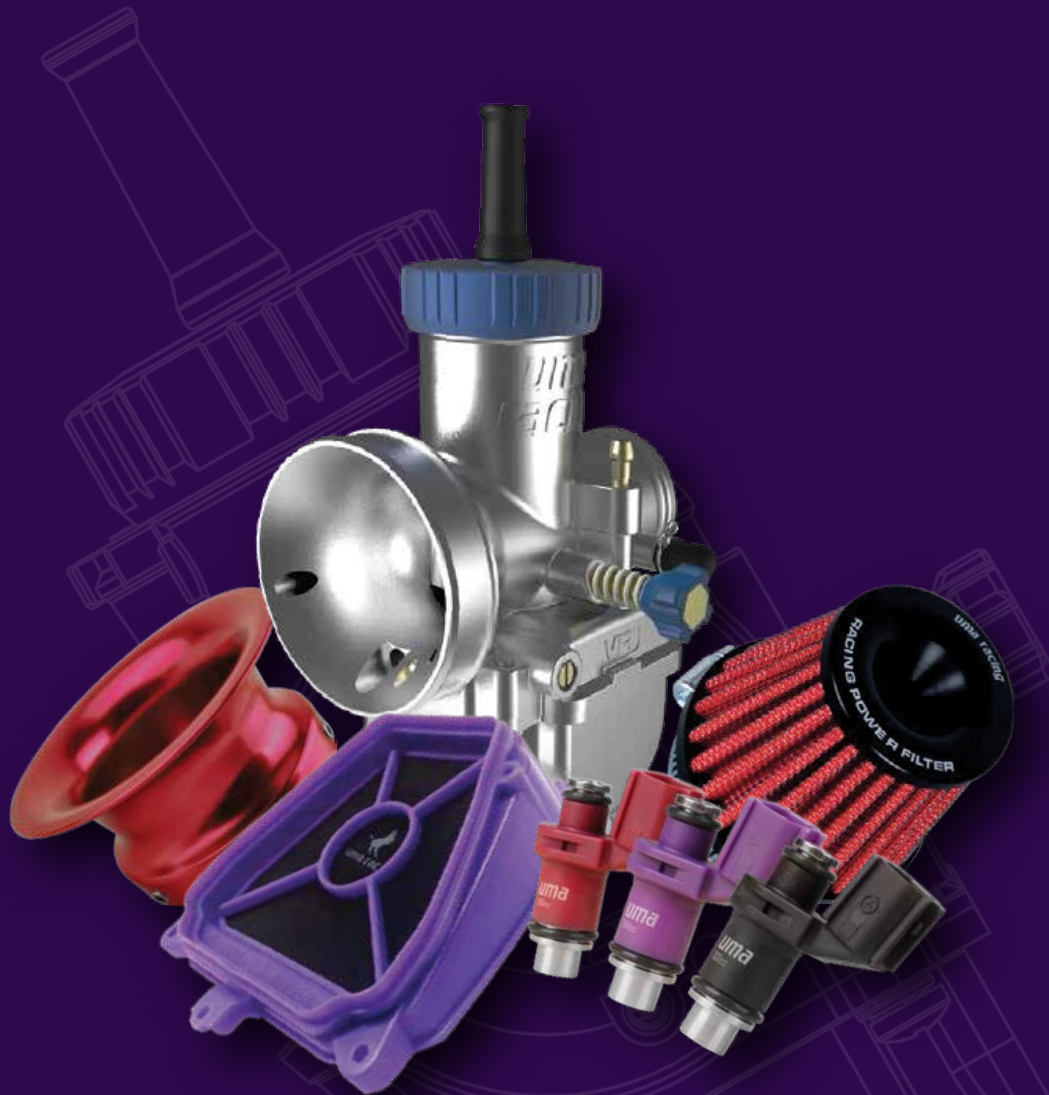
CODE	MODEL
02T00040	W110



CODE	MODEL
02T00610	WAVE DASH



CODE	MODEL
02T00650	BELANG



FUEL & INTAKE SYSTEM

AIR FILTER DUAL KIT

• Dual-layered filters

• Bigger surface area

• Increase airflow

• Washable & replaceable filters



CODE	MODEL
02A00270	R15V3 / MT15



CODE	MODEL
02A00160	LC135



CODE	MODEL
02A00220	BELANG



CODE	MODEL
02A00170	Y15ZR / Y16ZR



CODE	MODEL
02A00210	FZ150I



CODE	MODEL
02A00180	RS150R



CODE	MODEL
02A00190	NMAX

AIR FILTER KIT

- Single layer filter
- Bigger surface area
- Increase airflow
- Washable & replaceable filters



CODE	MODEL
02A00240	PCX150



CODE	MODEL
02A00230	NVX155



CODE	MODEL
02A00200	EGO



CODE	MODEL
02A00280	XMAX (INTAKE)



CODE	MODEL
02A00290	XMAX (CRANKCASE)

REPLACEMENT FILTER (10PCS/SET)



CODE	MODEL
02A00250	Y15ZR / Y16ZR



CODE	MODEL
02A00260	RS150R

THROTTLE BODY KIT

Y15ZR

- Clean & stylish
- Variable tuning options
- Dual injector for maximum performance
- Interchangeable intake manifold (long or short)



CODE	SIZE	
02TB0001	32MM	
02TB0002	34MM	
02TB0003	36MM	NEW
02TB0004	38MM	NEW

THROTTLE BODY KIT PARTS:



- Improves throttle response
- Compact structure
- Smoother airflow



- Improves injection consistency
- Optimised fuel flow
- Easy installation

INTAKE MANIFOLD ROUND (SHORT)

CODE	SIZE	
02IT0010	32MM	
02IT0020	34MM	
02IT0030	36MM	NEW
02IT0040	38MM	NEW

INJECTOR PIPE HOLDER

CODE
02IP0010

THROTTLE POSITION SENSOR (TPS)



- Higher resolution for ECU tuning
- High accuracy of TPS angle
- For modified throttle body
- Quicker response

CODE	MODEL
02T00660	Y15ZR / FZ150I / R15
02T00700	RS150R

FUEL PUMP 4.0 BAR

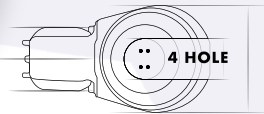
- Suitable for standard and bored up engine
- Consistent pressure for higher loads
- Maximise power output
- High flow capability



CODE	MODEL
02F00530	Y15ZR / Y16ZR

FUEL INJECTOR (4 HOLE)

- Consistent fuel delivery & distribution
- Precise fuel volume spray per minute (CC)
- Increase pressure for optimal combustion

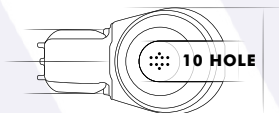


CODE	MODEL	TYPE
02AR0101	YAMAHA	160 CC
02AR0102	YAMAHA	240 CC
02AR0103	YAMAHA	320 CC

FUEL INJECTOR

CODE	MODEL	TYPE
02F00150	FZ150I	140 CC
02F00160	FZ150I	160 CC
02F00260	YAMAHA / Y15ZR V1	160 CC (NEW)
02F00370	YAMAHA / Y15ZR V1	240 CC (NEW)
02F00460	YAMAHA / Y15ZR V2	160 CC (B)
02F00470	YAMAHA / Y15ZR V2	240 CC (B)
02AR0125	Y15ZR	280 CC

NEW



V1 TO V2 INJECTOR HARNESS

CODE
02AR0104

CARBURETOR AIR FILTER & FUNNEL

AIR FILTER

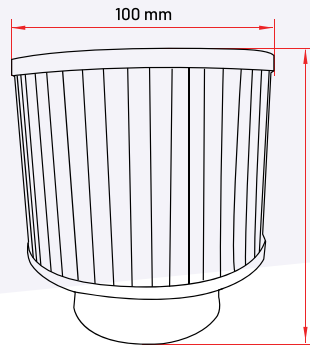
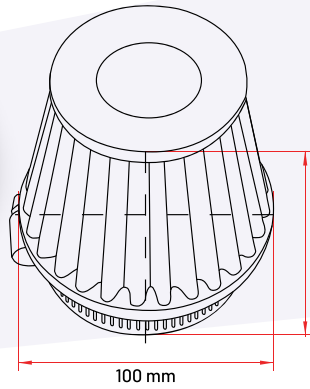
45°

CODE	SIZE
02A00030	45MM



90°

CODE	SIZE
02A00060	38MM
02A00070	45MM



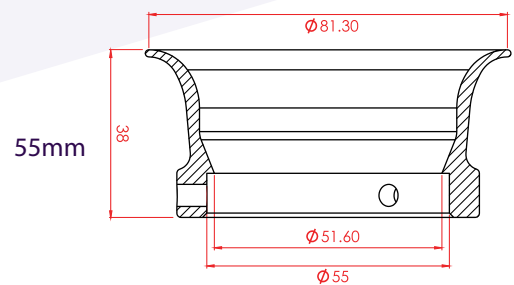
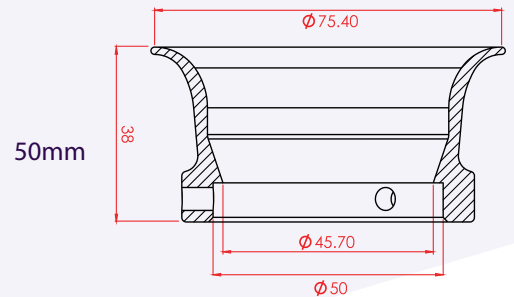
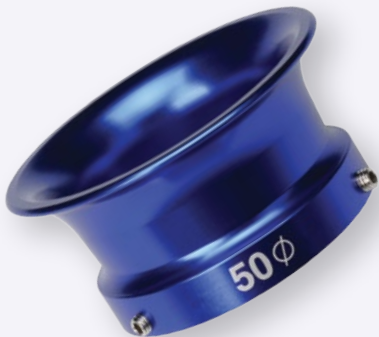
PRO - 1

CODE	SIZE
02A00090	35MM
02A00100	38MM
02A00110	48MM

MAX FLOW

CODE	MODEL	SIZE
02A00130	LC135	50MM
02A00140	LC135	55MM

AIR FUNNEL



CODE	MODEL	SIZE
02AF0001	BLUE	50MM
02AF0002	RED	50MM
02AF0004	BLUE	55MM
02AF0005	RED	55MM

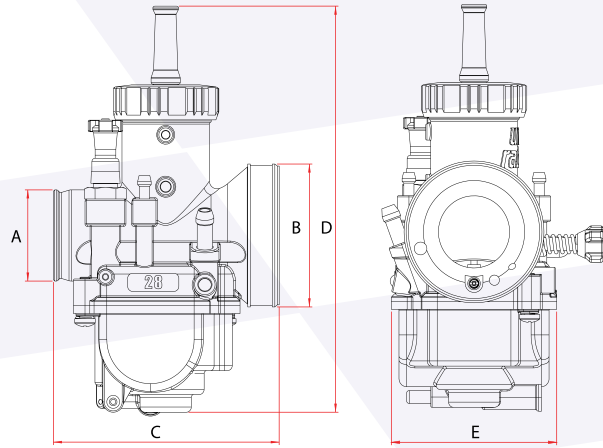
VR CARBURETOR

• Enhanced finishing

• High volume intake

• Ease of tuning

• Fuel efficient



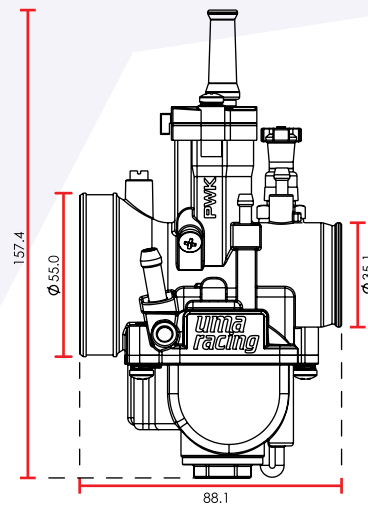
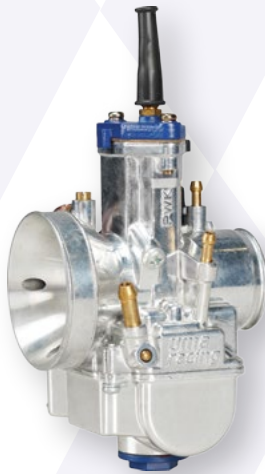
CODE	TYPE	SIZE	A	B	C	D	E
02C01020	4T - UNIVERSAL	28MM	35	55	88	150.9	65

PWK CARBURETOR V2 NEW

• Consistent fuel delivery & distribution

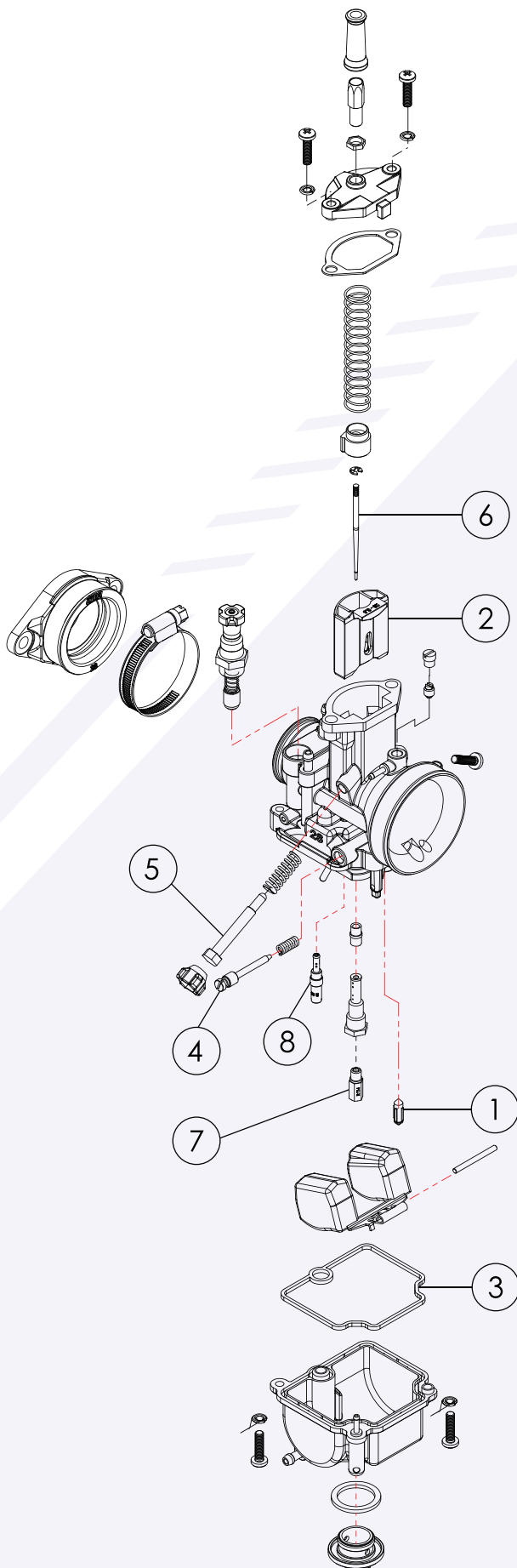
• Flat-D slide for improved throttle response

• Increase pressure for optimal combustion



CODE	TYPE & MODEL	SIZE	
02CA0010	4T - UNIVERSAL	24MM	NEW
02CA0020	4T - UNIVERSAL	28MM	NEW
02CA0030	4T - UNIVERSAL	30MM	NEW
02CA0040	4T - UNIVERSAL	32MM	NEW

CARBURETOR PARTS



S/NO	DESCRIPTION	CODE
1	FLOAT VALVE	02F00140
2	THROTTLE VALVE SET (3PCS)	
	24MM - (3.0MM)	02T00340
	28MM - (3.0MM)	02T00350
	30MM - (3.0MM)	02T00360
	32MM - (3.0MM)	02T00370
	34MM - (3.0MM)	02T00380
	24MM - (3.5MM)	02T00170
	28MM - (3.5MM)	02T00180
	24MM - (4.0MM)	02T00190
	28MM - (4.0MM)	02T00200
	30MM - (4.0MM)	02T00210
	32MM - (4.0MM)	02T00220
	34MM - (4.0MM)	02T00230
	24MM - (4.5MM)	02T00240
	28MM - (4.5MM)	02T00250
	30MM - (4.5MM)	02T00260
	32MM - (4.5MM)	02T00270
	34MM - (4.5MM)	02T00280
	24MM - (5.0MM)	02T00290
	28MM - (5.0MM)	02T00300
	30MM - (5.0MM)	02T00310
	32MM - (5.0MM)	02T00320
	34MM - (5.0MM)	02T00330
3	REPLACEMENT OIL SEAL	
	21 - 28MM	02000010
	30 - 34MM	02000070
	BASE O - RING	02000060
4	AIR SCREW	02A00120
5	IDLE SCREW	02I00120
6	JET NEEDLE	
	N68E (2T)	02N00010
	N68J (4T)	02N00020
	N68K (4T)	02N00030
	N68L (4T)	02N00040
	N68M (4T)	02N00050
	N68N (4T)	02N00060
	VR 28MM (4T)	02N00070
7	MAIN JET	REFER NEXT PAGE
8	PILOT JET	REFER NEXT PAGE

MAIN JET 5 PIECE KIT



CODE	SIZE
02MJ2001	110 - 118
02MJ2002	120 - 128
02MJ2003	130 - 138
02MJ2004	140 - 148
02MJ2005	150 - 158
02MJ2006	160 - 168

MAIN JET 10 PIECE KIT



CODE	SIZE
02M01020	88 - 110
02M01040	98 - 126

MAIN JET PIECES

CODE	SIZE	CODE	SIZE	CODE	SIZE
02MJ1001	88	02MJ1016	118	02MJ1031	148
02MJ1002	90	02MJ1017	120	02MJ1032	150
02MJ1003	92	02MJ1018	122	02MJ1033	152
02MJ1004	94	02MJ1019	124	02MJ1034	154
02MJ1005	96	02MJ1020	126	02MJ1035	156
02MJ1006	98	02MJ1021	128	02MJ1036	158
02MJ1007	100	02MJ1022	130	02MJ1037	160
02MJ1008	102	02MJ1023	132		
02MJ1009	104	02MJ1024	134		
02MJ1010	106	02MJ1025	136		
02MJ1011	108	02MJ1026	138		
02MJ1012	110	02MJ1027	140		
02MJ1013	112	02MJ1028	142		
02MJ1014	114	02MJ1029	144		
02MJ1015	116	02MJ1030	146		



PILOT JET 5 PIECE KIT

CODE	SIZE
02PJ2001	30 - 38
02PJ2002	40 - 48



PILOT JET KIT

For LC135 standard carburetor only

CODE	SIZE
02P00650	15 - 25
02P00670	35 - 45

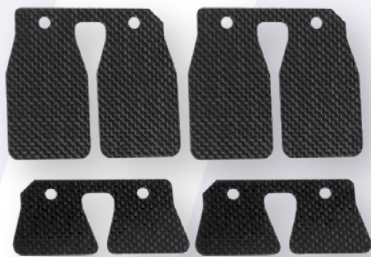


MAIN JET PIECES

CODE	SIZE
02PJ1001	26
02PJ1002	28
02PJ1003	30
02PJ1004	32
02PJ1005	34
02PJ1006	36
02PJ1007	38



CODE	SIZE
02PJ1008	40
02PJ1009	42
02PJ1013	44
02PJ1014	46
02PJ1010	48
02PJ1011	50
02PJ1012	52



CARBON REED PETAL VALVE

CODE	MODEL
02R00040	Y125Z / RXZ



QUICK DISCONNECT FUEL COUPLER

CODE	MODEL
02D00010	6MM
02D00020	8MM



NOZZLE JET HOLDER

CODE	MODEL
02M01690	UNIVERSAL

FUEL INJECTION INTAKE MANIFOLD

CODE	MODEL	SIZE
02100020	FZ1501	19.5 - 32MM (SUPERHEAD USE)
02100010	FZ1501 (OLD)	32MM
02100200	FZ1501 (NEW)	32MM
02100180	FZ1501 (NEW)	34MM
02100230	Y15ZR	32MM
02100210	Y15ZR	28.5 - 32MM (SUPERHEAD USE)
02100220	Y15ZR	32 - 34MM (SUPERHEAD USE)
02100240	FZ1501 (NEW)	30MM (SUPERHEAD USE)
02100250	FZ1501 (NEW)	34MM (SUPERHEAD USE)
02100380	Y15ZR	31 - 36MM (SUPERHEAD USE)



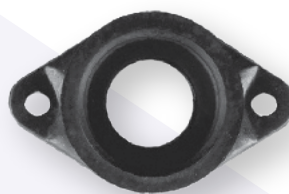
CARBURETOR INTAKE MANIFOLD

CODE	MODEL	SIZE
02100060	LC135	28MM
02100070	LC135	30MM
02100080	SRL	24MM
02100090	SRL	28MM
02100100	UNIVERSAL	24MM
02100110	UNIVERSAL	28MM



CONNECTION TUBE

CODE	MODEL	SIZE
02C00120	FZ1501	32MM
02C00880	FZ1501	34MM
02C00930	Y15ZR	34MM



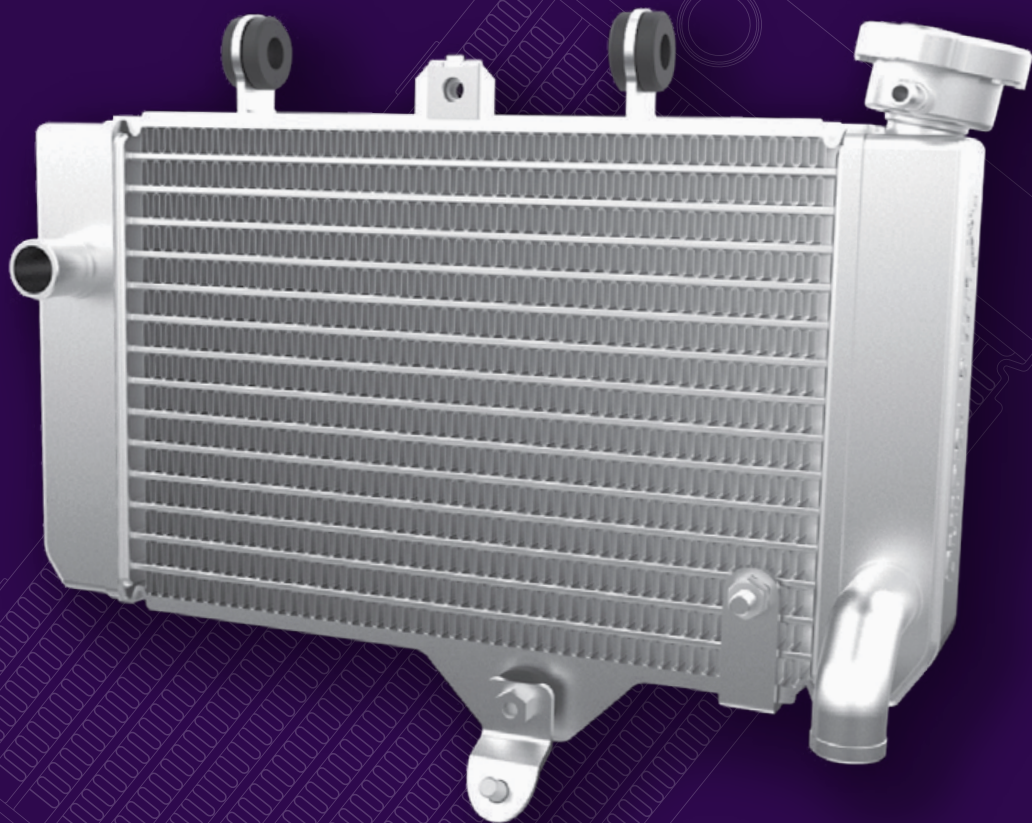
INTAKE ADAPTOR

CODE	SIZE
02100030	24MM
02100040	28MM
02100050	30 - 32MM



CARBURETOR FLANGE

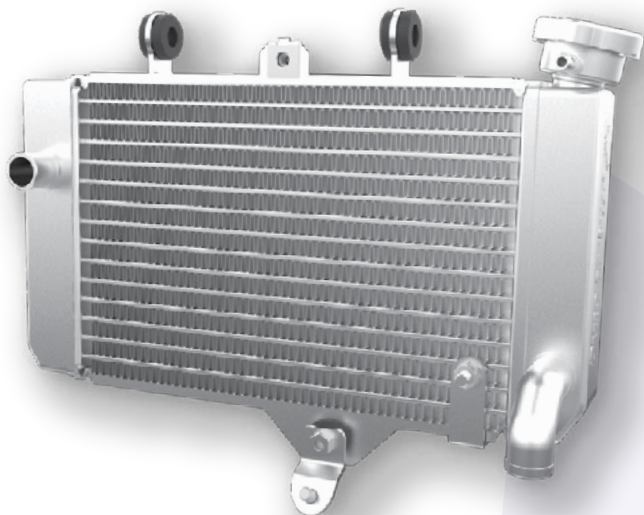
CODE	SIZE
02C00360	35 - 38MM
02C00370	38 - 40MM



COOLING SYSTEM

RADIATOR

- Made from high grade aluminium
- Superior cooling capability
- Thicker & wider core
- Quick heat disbursement
- Applicable for big bore engine
- 30% Larger than standard radiator
- Increased capacity



Increased Cooling:
30%

Water capacity :
350ml

Size:
295 (L) X 154 (H) X 26 (W)

CODE	MODEL
02R00060	RS150R



Increased Cooling:
40%

Water capacity :
350ml

Size:
305 (L) X 154 (H) X 26 (W)

CODE	MODEL
02R00050	Y15ZR



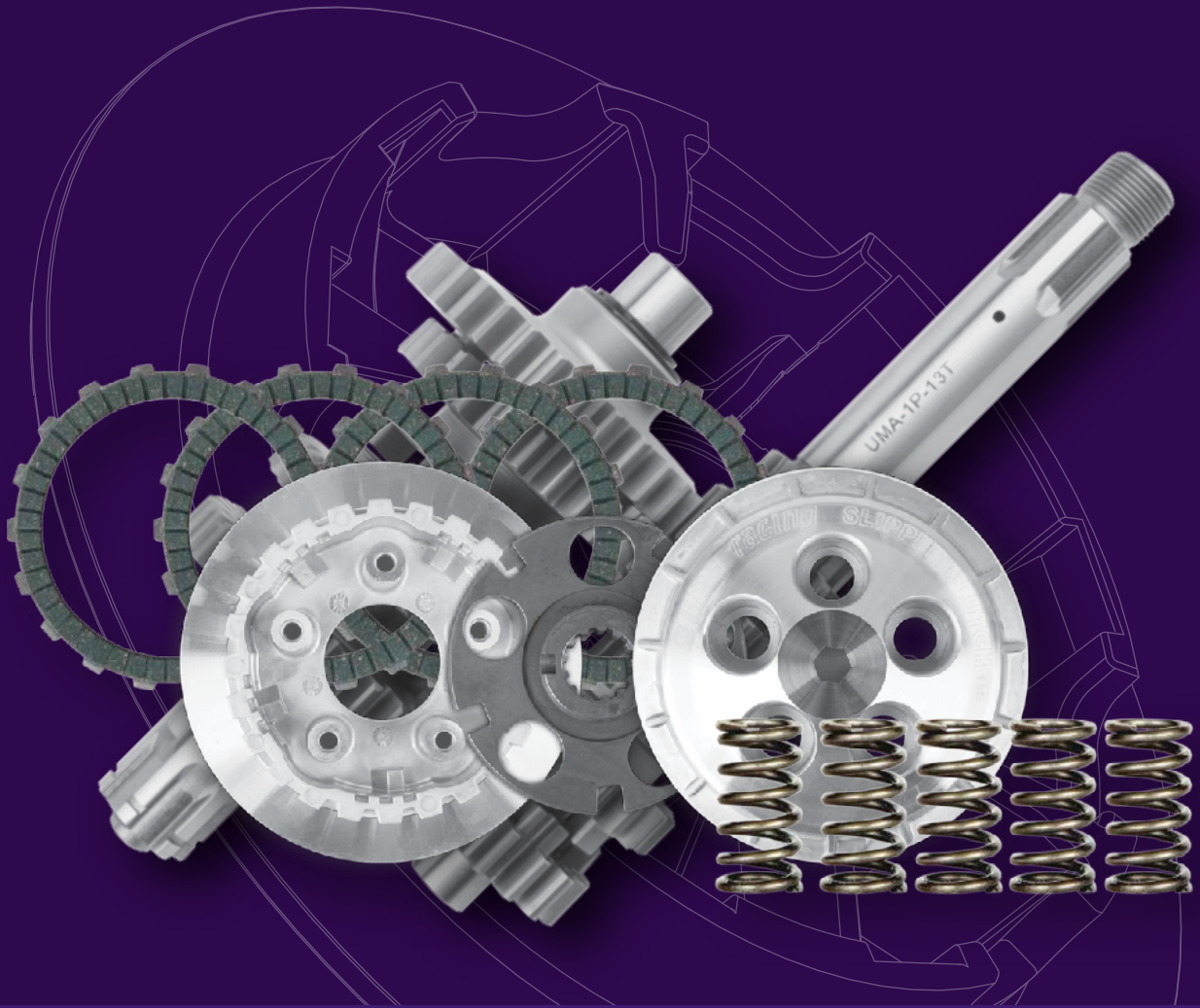
Increased Cooling:
40%

Water capacity :
380ml

Size:
305 (L) X 154 (H) X 26 (W)

CODE	MODEL
02R00070	LC135

NEW



TRANSMISSION SYSTEM

QUICKMISSION GEARBOX

- Greater flow rate
- High volume pump
- Superior performance
- High pressure for essential engine needs

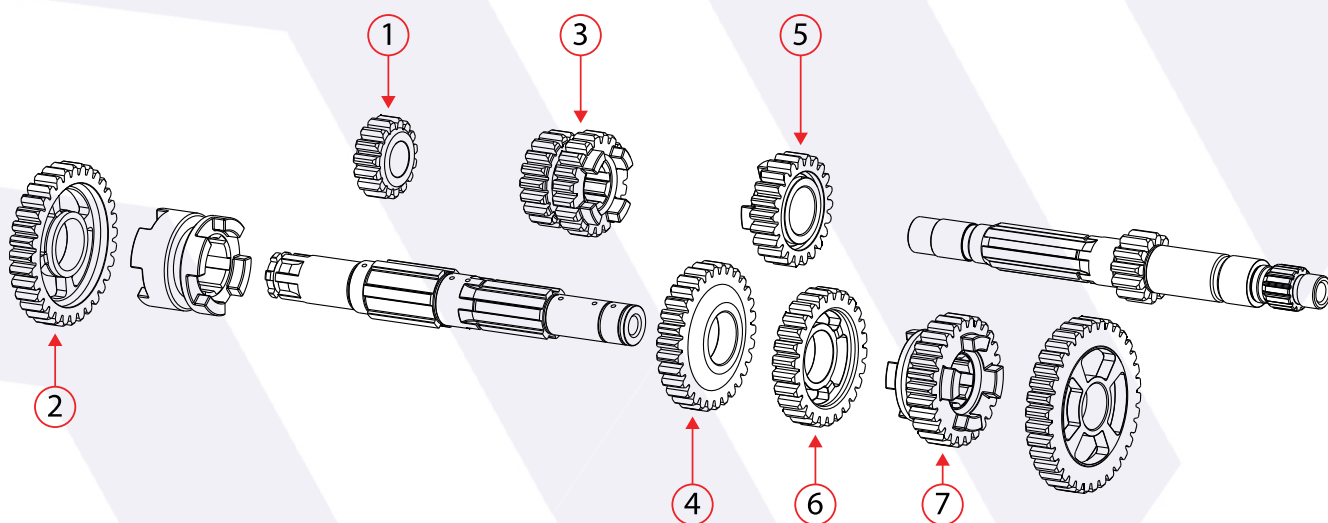


*Without drive axle

CODE	MODEL
02GB0100	LC135 / FZ150I / Y15ZR

TRANSMISSION GEAR

S/NO	PART NUMBER	DESCRIPTION
1	UMA - 2P - 15T	GEAR - 2ND PINION - 15T
2	UMA - 2W - 32T	GEAR - 2ND WHEEL - 18T
3	UMA - 3P - 18T	GEAR - 3RD PINION - 18T
	UMA - 4P - 19T	GEAR - 4TH PINION - 19T
4	UMA - 3W - 30T	GEAR - 3RD WHEEL - 30T
5	UMA - 4W - 26T	GEAR - 4TH WHEEL - 26T
6	UMA - 5P - 22T	GEAR - 5TH PINION - 22T
7	UMA - 4W - 26T	GEAR - 5TH PINION - 26T



GEARBOX

CODE	MODEL
02GB0010	SRL

TRANSMISSION GEAR

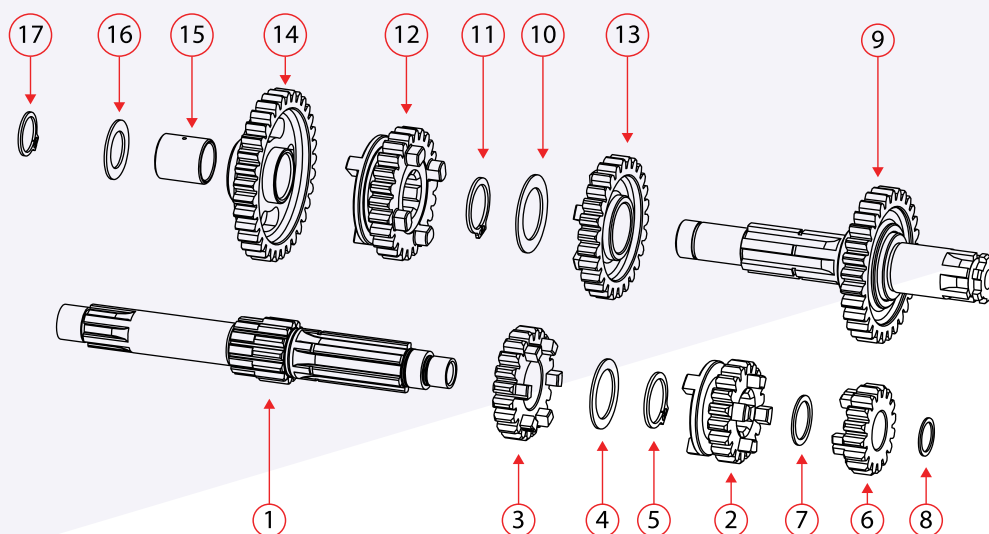
S/NO	PART NUMBER	DESCRIPTION
1	SRL - 17411 - 00	AXLE MAIN - 13T
2	SRL - 17131 - 00	GEAR - 3RD PINION - 18T
3	SRL - 17141 - 00	GEAR - 4TH PINION - 20T
4	*90201 - 20266	WASHER - PLATE - T = 1.0
5	*90341 - 20809	CIRCLIP
6	SRL - 17121 - 00	GEAR - 2ND PINION - 16T
7	*90210 - 15566	WASHER - PLATE - T = 0.8
8	*90210 - 12266	WASHER - PLATE - T = 0.7
9	SRL - 17402 - 00 SRL - 17221 - 00	DRIVE AXLE ASSEMBLY GEAR - 2ND WHEEL - 29T
10	*90210 - 21266	WASHER - PLATE - T = 0.7
11	*93410 - 21809	CIRCLIP
12	SRL - 17241 - 00	GEAR - 4TH WHEEL - 24T
13	SRL - 17231 - 00	GEAR - 3RD WHEEL - 26T
14	SRL - 17211 - 00	GEAR - 1ST WHEEL - 33T
15	*90387 - 1503D	COLLAR
16	*90201 - 15266	WASHER - PLATE - T = 1.0
17	99009 - 15400	CIRCLIP



*Without drive axle

OPTIONAL GEAR

S/NO	PART NUMBER	DESCRIPTION
3	SRL - 17141 - 10	GEAR - 4TH PINION - 22T
6	SRL - 17121 - 10	GEAR - 2ND PINION - 18T
9	SRL - 17221 - 20 SRL - 17221 - 10	GEAR - 2ND WHEEL - 30T GEAR - 2ND WHEEL - 32T
12	SRL - 17241 - 10	GEAR - 4TH WHEEL - 26T



SLIPPER CLUTCH

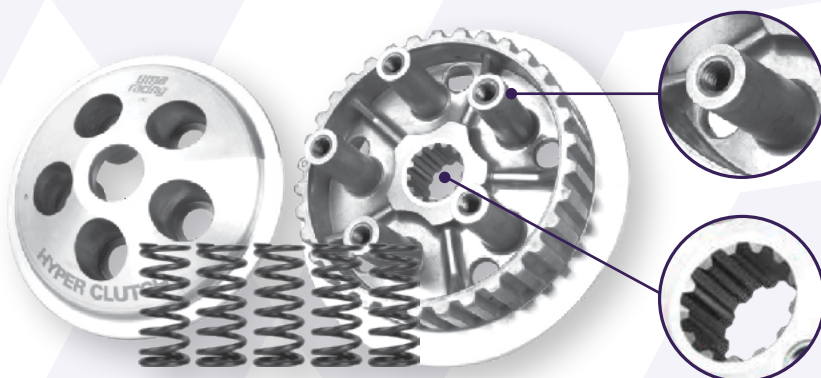
- Reduce transmission wear & tear
- Decrease & absorb engine braking force
- Prevent rear wheel lock
- Race proven



CODE	MODEL
02C00890	Y15ZR / Y16ZR
02C01030	RS150 / SONIC NEW

HYPER CLUTCH

- Minimal chain noise
- Smooth operation
- Supreme durability



5-Springs for better gear engagement compared to standard 4-spring setup

Steel insert spline made from stainless steel to reduce wear & tear

HYPER CLUTCH

CODE	MODEL
02C00810	Y15ZR / Y16ZR / R15 V3
02C00920	R25
02C00980	RS150R

4 GEAR CLUTCH (DUAL)

CODE	MODEL
02C00480	LC4S (AUTO)
02C00490	SRL110 / Y110
02C00700	W100 / EX5
02C00750	SRL115I
02C00950	SRL110 (RACE)

4 GEAR CLUTCH

CODE	MODEL
02C00040	LC4S / LC5S

5 GEAR CLUTCH

CODE	SIZE
02C00070	LC5S / FZ150I / R15 V1 & V2

6 GEAR CLUTCH

CODE	MODEL
02C00710	Y125Z



SRL110 (RACE)

CLUTCH SPRING



CODE	MODEL
02C00430	EX5 / EX5 DREAM / W100 / W125
02C00440	LCES / LC4S / LC5S / FZ150I
02C00450	RXZ
02C00460	SRL
02C00760	LC135 (AUTO)
02C00790	SRL (OLD AUTO)
02C00820	R25
02C00860	Y16ZR / Y15ZR / Y125Z
02C00870	KR150RR
02C00990	RS150R

CLUTCH PLATE



CODE	MODEL
02C00960	SRL (RACE USE)

CLUTCH PLATE

• Increase clutch shifting smoothness

• Maximum performance & precise power transmission

• Highly durable steel



CODE	MODEL	PIECES
02CD0010	LC5S	5
02CD0020	EX5	4
02CD0030	WAVE125	4
02CD0040	LC135	4
02CD0050	Y125Z	5
02CD0060	R25 / KR150	6
02CD0070	Y16ZR / Y15ZR	4
02CD0080	R15	3
02CD0110	Y110 / SRL	5
02CD0120	KRISS	5
02CD0140	RS150R	5
02C00620	RXZ	6
02C00640	Y110	5
02C00910	R15 (CARBONV3)	6

CLUTCH PUSH ROD

• High grade steel for maximum strength

• Tuned for consistent performance

• Highly durable & resistant to bending



CODE	MODEL
02C01010	Y15ZR

CVT PULLEY KIT

• Better heat dissipation

• Highly durable

• High quality

• Low noise



CODE	MODEL	ROLLER SIZE
02P00870	NMAX / NVX	20 X 12 (116)
02P00890	VARIO 125 / 150	20 X 15 (13.56)
02P00920	NMAX / NVX (NEW)	20 X 12 (136) NEW
02P00930	BEAT110	18 X 14 (136)

RACING PULLEY ASSEMBLY



CODE	MODEL	ROLLER SIZE
02P00200	MOSKITO	18 X 14 (126)



CODE	MODEL	ROLLER SIZE
02P00060	EGO	18 X 14 (106)
02P00210	EGO / EGO S NOUVO / NOUVO S	16 X 13 (96)



CODE	MODEL	ROLLER SIZE
02P00220	NOUVO LC	20 X 12 (116)



AUTO SPORT CLUTCH SHOE

CODE	MODEL
02C00110	EGO / EGO S / NOUVO / NOUVO S



AUTO CLUTCH HOUSING

CODE	MODEL
02C00140	EGO



FORGED DRIVE FACE

CODE	MODEL
02D00200	ELEGAN

PULLEY ROLLER



SIZE: 20 x 12

CODE	MODEL	WEIGHT
02PR0506	NMAX / NVX	6G
02PR0507	NMAX / NVX	7G
02PR0508	NMAX / NVX	8G
02PR0509	NMAX / NVX	9G
02PR0510	NMAX / NVX	10G
02PR0511	NMAX / NVX	11G
02PR0512	NMAX / NVX	12G

SIZE: 15 x 12

CODE	MODEL	WEIGHT
02P00690	EGO / EGO S / NOUVO / NOUVO S	9G
02P00240	EGO / EGO S / NOUVO / NOUVO S	10G
02P00250	EGO / EGO S / NOUVO / NOUVO S	11G
02P00260	EGO / EGO S / NOUVO / NOUVO S	12G

SIZE: 18 x 14

CODE	MODEL	WEIGHT
02P00360	MOSKITO / EGO / CLICK	7.5G
02P00370	MOSKITO / EGO / CLICK	8G
02P00380	MOSKITO / EGO / CLICK	10G
02P00390	MOSKITO / EGO / CLICK	11G

SIZE: 16 x 13

CODE	MODEL	WEIGHT
02P00300	EGO / EGO S / NOUVO / NOUVO S	7.5G
02P00310	EGO / EGO S / NOUVO / NOUVO S	8G
02P00710	EGO / EGO S / NOUVO / NOUVO S	9G
02P00270	EGO / EGO S / NOUVO / NOUVO S	10G
02P00280	EGO / EGO S / NOUVO / NOUVO S	11G
02P00290	EGO / EGO S / NOUVO / NOUVO S	12G
02P00720	EGO / EGO S / NOUVO / NOUVO S	13G

SIZE: 20 x 12

CODE	MODEL	WEIGHT
02P00430	NOUVO LC	8
02P00440	NOUVO LC	9
02P00400	NOUVO LC	10
02P00410	NOUVO LC	11
02P00420	NOUVO LC	12

SIZE: 17 x 12

CODE	MODEL	WEIGHT
02P00330	VS	10G
02P00340	VS	11G
02P00350	VS	12G

SIZE: 20 x 15

CODE	MODEL	WEIGHT
02P00450	ELEGAN	11.5G
02P00460	ELEGAN	12.5G
02P00470	ELEGAN	13G
02P00480	ELEGAN	13.5G
02P00490	ELEGAN	14.5G
02B00500	ELEGAN	15.5G

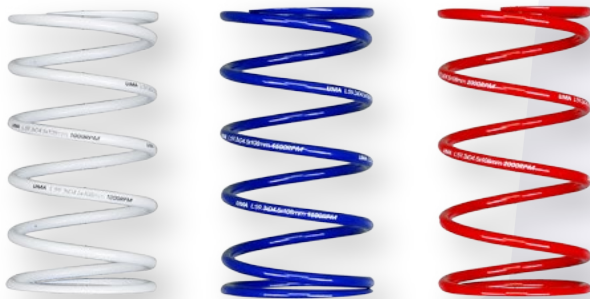
TORQUE SPRING

- Quick response in acceleration
- Maximise power transmission
- Super stiff & highly durable
- Reduce belt slippage



1000RPM

1500RPM



1000RPM

1500RPM

2000RPM



CODE	MODEL	RPM
02T00670	NMAX / NVX	1000
02T00680	NMAX / NVX	1500

CODE	MODEL	RPM
02T00160	NOUVO LC	1000
02T00100	NOUVO LC	1500
02T00140	NOUVO LC	2000
02T00150	ICON	1000
02T00180	ICON	1500
02T00120	ICON	2000

CODE	MODEL	RPM
02T00070	EGO	1500
02T00110	EGO	2000
02T00090	NOUVO	1500
02T00130	NOUVO	2000

AUTO CLUTCH SPRING



1000RPM

1500RPM

2000RPM

CODE	MODEL	RPM
02C0019W	EGO	1000
02C0016R	EGO	2000
02C0021W	NOUVO	1000
02C0018R	NOUVO	2000
02C0020W	ICON	1000
02C0017W	ICON	2000



EXHAUST SYSTEM

TRU PRESSURE EXHAUST

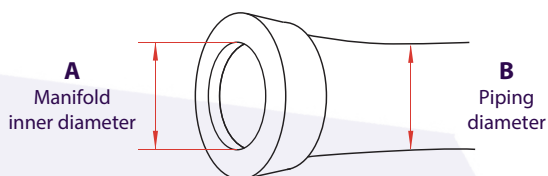
- Enhanced Sound
- Plug & play
- Withstand up to 200cc
- Improved horsepower & torque



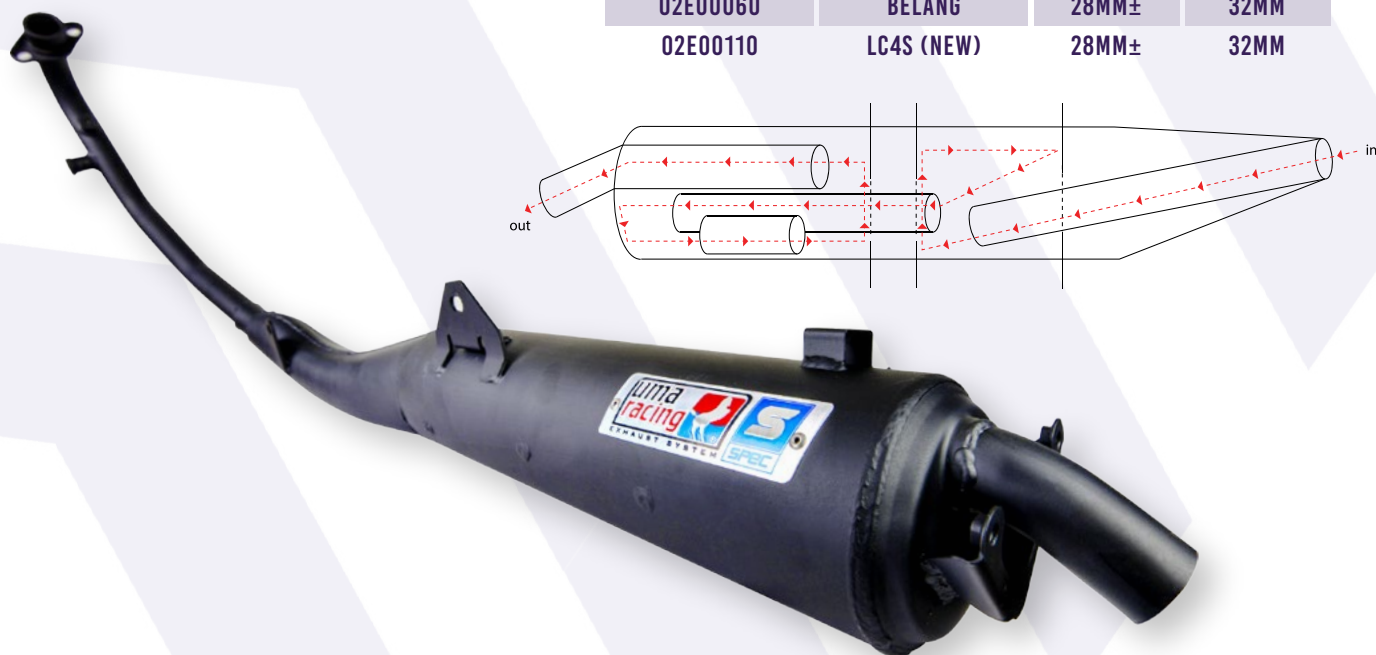
CODE	MODEL	A	B
02E00120	Y15ZR	28MM±	32MM
02E00130	RS150R	32.5MM±	35MM
02E00140	VF3I	29MM±	31.8MM

BACK PRESSURE EXHAUST

- Improve horsepower & torque
- Withstand up to 200cc
- Low Noise
- Plug & play



CODE	MODEL	A	B
02E00010	Y15ZR	28MM±	32MM
02E00020	LC4S	28MM±	32MM
02E00030	LC5S	28MM±	32MM
02E00040	RS150R	28MM±	32MM
02E00050	FZ150I	28MM±	32MM
02E00060	BELANG	28MM±	32MM
02E00110	LC4S (NEW)	28MM±	32MM





ELECTRONICS & IGNITION SYSTEM

M5 ECU

- Minimal tools for installation
- Unlock RPM, No limiter
- Autotune features
- Plug & play
- Back fire adjustments
- Fuel compensation for engine temperature
- Easy tuning through smartphone or laptop
- B-Link smart tuning & monitoring



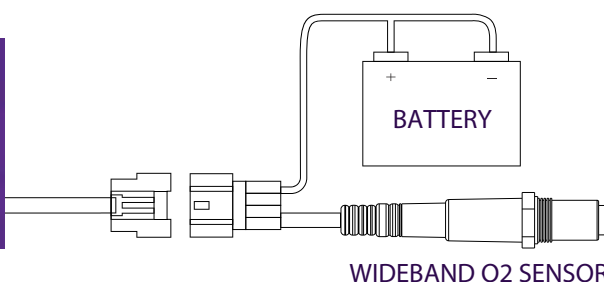
CODE	MODEL
02AR0065	Y15ZR / FZ150I / R15 V2
02AR0066	RS150R
02AR0070	NMAX
02AR0076	R25 / R3
02AR0077	R15 V3
02AR0078	XMAX
02AR0085	Y15ZR V2
02AR0086	SYM VF3I
02AR0087	RFS150I
02AR0092	RAIDER150FI
02AR0099	NVX155 / NMAX V2
02AR0100	VARIO150
02AR0120	MT15 V2 / Y16ZR
02AR0121	R25 / MT25 (>2019)
02AR0123	ADV150
02AR0113	WINNER X / RS-X NEW

AFR WIDEBAND MODULE

- High accuracy & response
- Wideband O2 sensor included
- Auto tuning for M5 ECU
- Water resistant
- Plug & play



CODE	MODEL
02AR0072	UNIVERSAL



IMC DIGITAL CDI

• Increase power

• Enhance engine responsiveness

• Programmable mapping



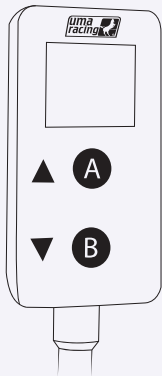
1 MAP (WITHOUT CONTROLLER)

CODE	MODEL
02M01570	LC135
02M01580	EX5
02M01610	BELANG 6 WIRE (OLD)
02M01620	BELANG 6 WIRE (NEW)



4 MAP (WITH CONTROLLER)

CODE	MODEL
02M01110	SRL110 / SRL115 / EGO / NOUV0115
02M01120	LC135 / LCES / LC4S / LC5S
02M01420	W110
02M01430	W125



CONTROLLER SETTING	4 MAP IMC DIGITAL CDI FUNCTION
PRESS UP OR DOWN BUTTON A OR B	4 PRESET MAPS
PRESS UP & DOWN BUTTON SIMULTANEOUSLY FOR 3 SECONDS A+B	DEGREE MANIPULATION -9 TO +9

QUICKSHIFTER & IGNITION ROTOR

QUICKSHIFTER CDI

- Reduce wear & tear of clutch & transmission
- Suitable for use with CDI
- Clutchless shifting
- Plug & play

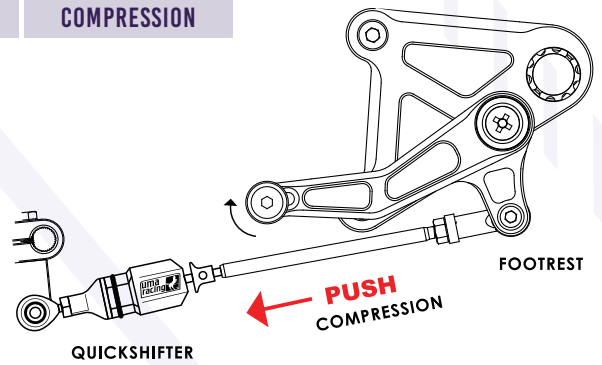
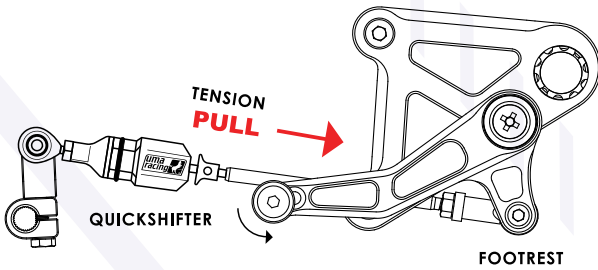


Tension



Compression

CODE	MODEL	TYPE
02AR0062	UNIVERSAL	TENSION
02AR0063	UNIVERSAL	COMPRESSION



MAGNETO SUPER LIGHT IGNITION ROTOR

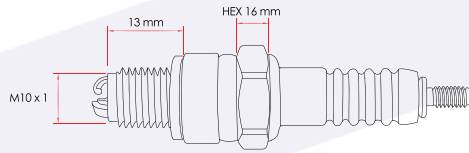
- Improve throttle response
- Improve acceleration
- Super lightweight
- Race proven



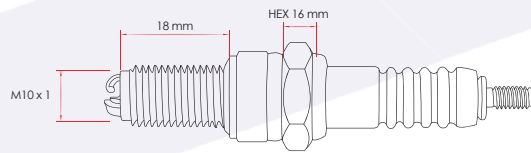
CODE	MODEL	WEIGHT
02100270	Y15ZR / Y16ZR	1.22KG
02100360	LC135 4S	0.967KG
02100370	LC135 5S	0.974KG

UTECH IRIIDIUM SPARK

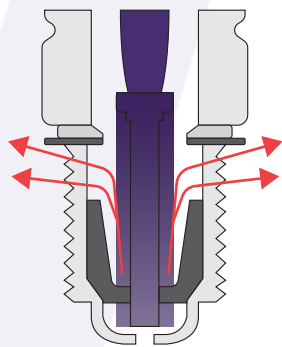
- High performance spark plug
- Promotes better combustion
- Improves throttle response
- Longer plug service life



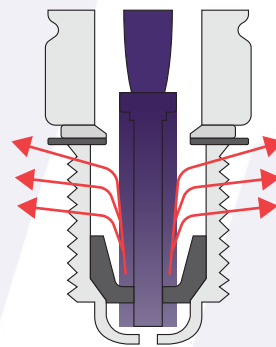
CODE	MODEL	TYPE
02AR0114	UNIVERSAL	AC7R31



CODE	MODEL	TYPE
02AR0067	UNIVERSAL	AB8R31
02AR0068	UNIVERSAL	AB9R31



- AB8R31**
- Suitable for daily use engine
 - High durability



- AB9R31**
- Suitable for high performance engine
 - Withstands higher temperature

PLUG COIL

- Improves engine response
- Accurate & consistent performance
- Greater & more stable energy output
- Plug & play



Carburetor Type (Race Use)

CODE	MODEL
02PC001P	UNIVERSAL



Fuel Injection Type

CODE	MODEL
02PC002R	UNIVERSAL



Carburetor Type (Scooter)

CODE	MODEL
02PC003A	UNIVERSAL

STARTER



REINFORCED STARTER MOTOR

CODE	MODEL
02S00090	LC135 / LCES



4 POLE PERFORMANCE STARTER

CODE	MODEL
02S00080	EGO / NOUVO



CDI CONTROLLER

CODE
02M01400



CDI ADVANCED CONTROLLER

CODE
02M01350



FUEL INJECTION CONTROLLER

CODE	MODEL
02S00130	W110



GI SIGNAL CONTROLLER

CODE	MODEL
02S00180	YAMAHA



START STOP SWITCH

CODE	MODEL
02S00100	UNIVERSAL



ENGINE STOP SWITCH

CODE	MODEL
02S00110	UNIVERSAL



ACCESSORIES & METERS

QUICK THROTTLE

- Increase responsiveness
- Quick revs
- Shorter stroke
- Larger pulley



SET

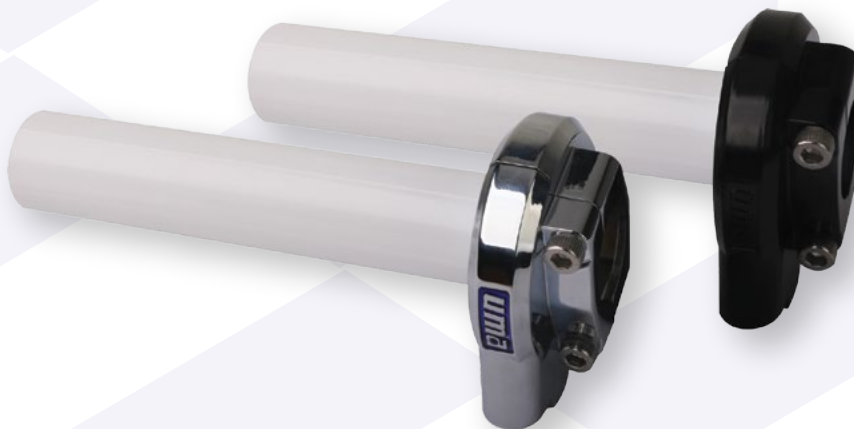
CODE	MODEL
02Q00010	LC135
02Q00020	SCOOTER
02Q00030	EX5 / LC / SRL

PIPE WITHOUT CABLE

CODE	MODEL
02Q00060	UNIVERSAL

CABLE ONLY

CODE	MODEL
02Q00040	LC135
02Q00050	SCOOTER



PIPE WITHOUT CABLE

CODE	MODEL	COLOUR
02Q00090	Y15ZR / YAMAHA	BLACK
02Q00100	Y15ZR / YAMAHA	CHROME

BYPASS GRENADE



45°

CODE	MODEL	COLOUR
02B0042A	YAMAHA / HONDA	BLUE
02B0042B	YAMAHA / HONDA	BLACK
02B0042G	YAMAHA / HONDA	GOLD
02B0042R	YAMAHA / HONDA	RED



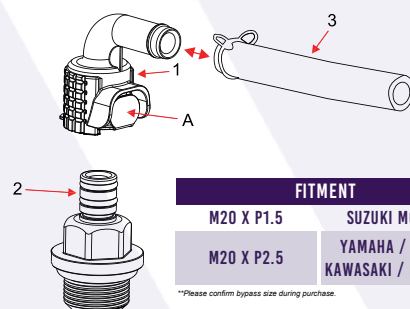
90°

CODE	MODEL	COLOUR
02B0043A	YAMAHA / HONDA	BLUE
02B0043B	YAMAHA / HONDA	BLACK
02B0043G	YAMAHA / HONDA	GOLD
02B0043R	YAMAHA / HONDA	RED
02B0044A	SUZUKI	BLUE
02B0044B	SUZUKI	BLACK
02B0044G	SUZUKI	GOLD
02B0044R	SUZUKI	RED
02B0021A	KAWASAKI / MODENAS	BLUE
02B0021B	KAWASAKI / MODENAS	BLACK
02B0021G	KAWASAKI / MODENAS	GOLD
02B0021R	KAWASAKI / MODENAS	RED

BYPASS VENT HOSE

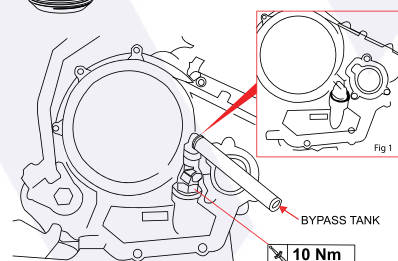


CODE	MODEL	COLOUR
02B00290	UNIVERSAL	NEON BLUE
02B00300	UNIVERSAL	NEON GREEN
02B00310	UNIVERSAL	NEON ORANGE
02B00320	UNIVERSAL	NEON PURPLE
02B00330	UNIVERSAL	NEON YELLOW



FITMENT	
M20 X P1.5	SUZUKI MODELS
M20 X P2.5	YAMAHA / HONDA KAWASAKI / MODENAS

**Please confirm bypass size during purchase.



STEP-BY-STEP INSTRUCTIONS :

- Step 1 : Push button 'A' to release the base
- Step 2 : Remove original oil level from bike (Fig 1)
- Step 3 : Install new bypass
- Step 4 : Connect vent hose to bypass

UTECH SPEEDOMETER



CODE	MODEL
02M01600	Y15ZR

- Speedometer
- Shift light
- Temperature °C / °F
- Clock
- Air / Fuel ratio
- Odometer
- Throttle Position Sensor (TPS)
- Volt Indicator
- Black Light
- Trip meter
- Water temperature
- Fuel gauge
- Oil Temperature
- Speed Warning light
- Gear indicator
- Target distance timer
- Tachometer
- Temperature Alarm
- Hour meter

DIGITAL SP METER & COLOUR LIGHT















CODE	MODEL
02M00140	LC5S

- Speedometer
- Shift light
- Volt indicator
- Odometer
- Air / Fuel ratio
- Fuel gauge
- Trip meter
- Water thermometer
- Clock
- JIS D 0203
- Backlight

SP METER & COLOUR LIGHT



CODE	MODEL
02M00160	LC135

-  Speedometer
-  Shift light
-  Volt indicator
-  Odometer
-  Air / Fuel ratio
-  JIS D 0203
-  Fuel gauge
-  Trip meter
-  Water thermometer
-  Clock
-  Tachometer
-  Backlight

DIGITAL LCD BLUE BACK LIGHT



CODE	MODEL
02M00150	EX5

-  Speedometer
-  Shift light
-  Volt indicator
-  Odometer
-  Air / Fuel ratio
-  JIS D 0203
-  Fuel gauge
-  Trip meter
-  Water thermometer
-  Clock
-  Tachometer
-  Backlight



T-SHIRT EXHAUST 2016 (BLACK)

CODE	SIZE
02TS0057	3XL



T-SHIRT VR CARBURETOR 2016 (BLACK)

CODE	SIZE
02TS0077	3XL



T-SHIRT MALAYSIA 2016 (BLACK)

CODE	SIZE
02TS0710	S
02TS0720	M
02TS0730	L
02TS0740	XL
02TS0750	2XL



T-SHIRT EXHAUST 2016 (WHITE)

CODE	SIZE
02TS0062	S
02TS0063	M
02TS0064	L
02TS0065	XL
02TS0066	2XL



T-SHIRT ASIA 2017 (BLACK)

CODE	SIZE
02TS0205	XL



T-SHIRT MOTOGP 2018 (BLACK)

CODE	SIZE
02TS0810	S
02TS0850	2XL



T-SHIRT MOTOGP 2018 (WHITE)

CODE	SIZE
02TS0910	S
02TS0950	2XL



T-SHIRT ARRC CUBPRIX 2018 (BLACK)

CODE	SIZE
02TS1010	S
02TS1050	2XL



T-SHIRT SPARK PLUG (BLACK)

CODE	SIZE
02TS1110	S
02TS1120	M
02TS1130	L
02TS1140	XL
02TS1150	2XL



T-SHIRT MOTOGP 2019 (CAMO)

CODE	SIZE
02TS1220	M
02TS1250	2XL



T-SHIRT MOTOGP GRESINI 2019 (BLACK)

CODE	SIZE
02TS1300	XS
02TS1310	S
02TS1360	XXS



UMA UMBRELLA

CODE

02MU0001



UMA STICKERS

CODE

02RT0001